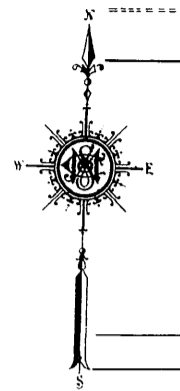


219 MIAMI CHAPEL RD.



218

219

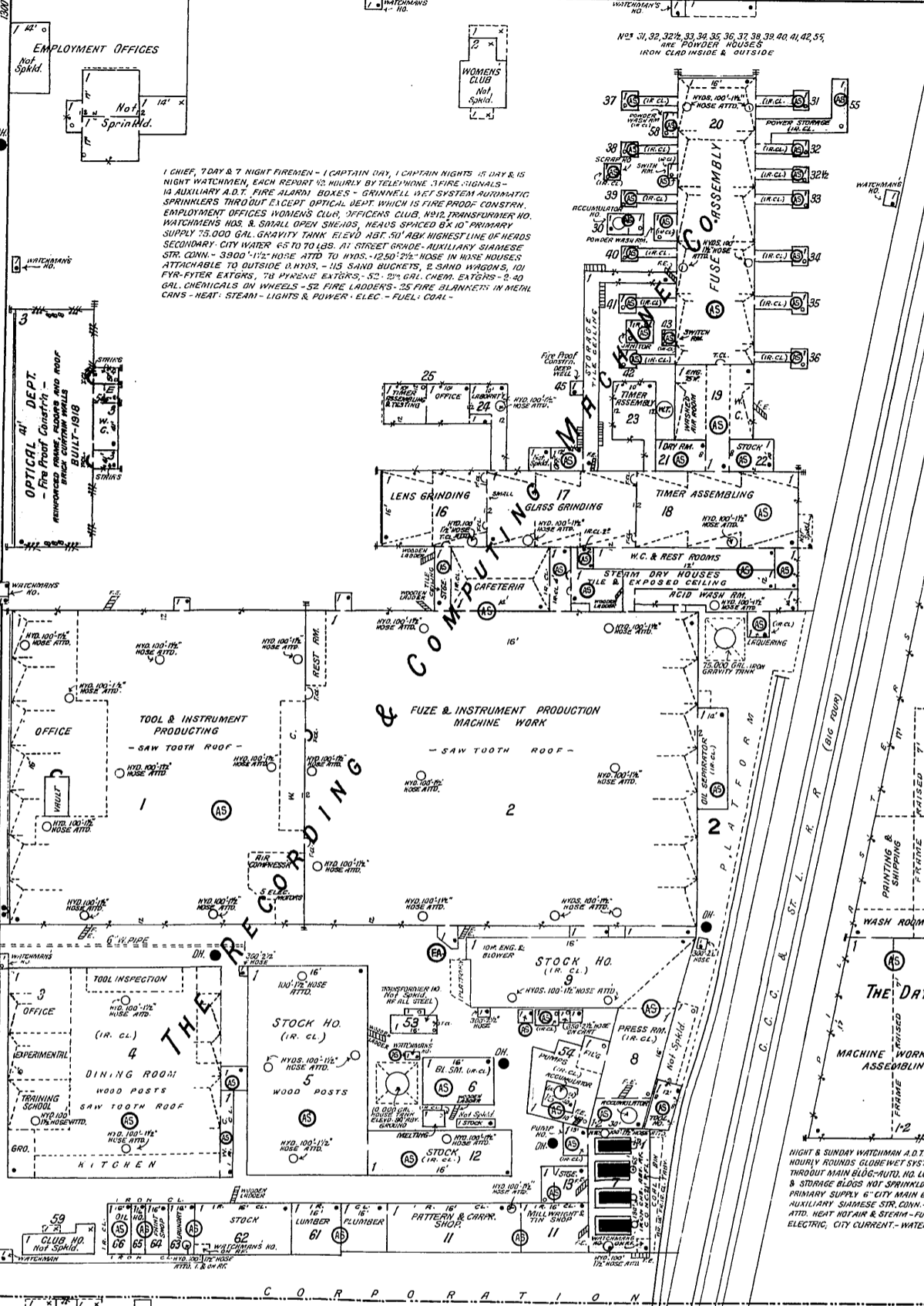
BROCKTON

BLVD. (ESSEX AV.)

NOBEL AV.

WISCONSIN

JETT AV.



1 CHIEF, 7 DAY & 7 NIGHT FIREMEN - 1 CAPTAIN DAY, 1 CAPTAIN NIGHTS 15 DAY & 15 NIGHT WATCHMEN, EACH REPORT 1/2 HOURLY BY TELEPHONE. 3 FIRE SIGNALS - 14 AUXILIARY A.D.T. FIRE ALARM BOXES - GRINNELL NET SYSTEM AUTOMATIC SPRINKLERS THROUGHOUT EXCEPT OPTICAL DEPT WHICH IS FIRE PROOF CONSTRN. EMPLOYMENT OFFICES WOMEN'S CLUB OFFICERS CLUB W.P.A. TRANSFORMER NO. WATCHMEN'S HOS. & SMALL OPEN S.H. HOS. HEADS SPACED 6' X 10' PRIMARY SUPPLY 75,000 GAL. GRAVITY TANK ELEV. 487.50' ABOVE HIGHEST LINE OF HEADS SECONDARY CITY WATER 65 TO 70 LBS. AT STREET GRADE - AUXILIARY SIAMSESE STR. CONN. - 3900' 1/2" HOSE ATT. TO HYDS. - 1250' 2 1/2" HOSE IN WARE HOUSES ATTACHABLE TO OUTSIDE PLUMBR. - 113 SAND BUCKETS, 2 SAND WAGONS, 101 F.Y.R. FLYER EXTENRS., 78 PARENTE EXTENRS., 52 2 1/2" GAL. CHEM. EXTENRS. - 2-40 GAL. CHEMICALS ON WHEELS - 52 FIRE LADDERS - 25 FIRE BLANKETS IN METAL CANS - HEAT - STEAM - LIGHTS & POWER - ELEC. - FUEL - COAL -

NIGHT & SUNDAY WATCHMAN A.D.T. SERVICE 5 STATIONS. HOURLY ROUNDS GLOBEWET SYSTEM AUTO. SPRINKLERS THROUGHOUT MAIN BLDG. - AUTO. NO. LUMBER SHED, COAL SHED & STORAGE BLDGS. NOT SPRINKLED. HEADS SPACED 6' X 10'. PRIMARY SUPPLY 6" CITY MAIN 65 LBS. AT STREET GRADE. AUXILIARY SIAMSESE STR. CONN. - SINGS WITH 100' HOSE ATT. HEAT HOT AIR & STEAM - FUEL - COAL - LIGHTS & POWER - ELECTRIC, CITY CURRENT - WATER CASKS & PAILS DISTRIBUTED.

