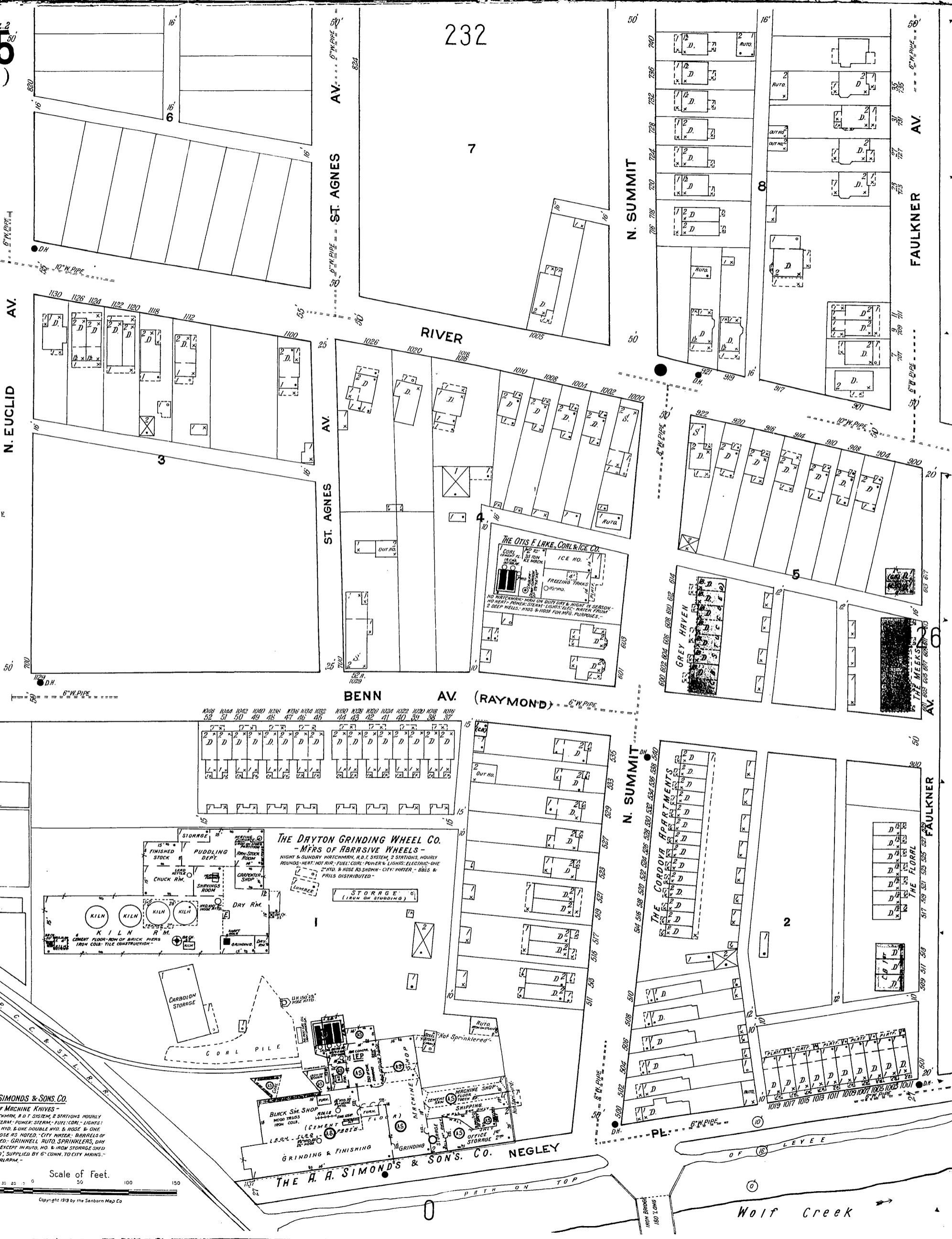


DRAYTON Q. VOL. 2
225
(70 Vol. I)

232



231



The A.A. Simonds & Sons Co.
- MFRS OF MACHINE KNIVES -
ONE NIGHT & SUNDAY WATCHMAN, R.D.T. SYSTEM, 2 STATIONS HOURLY
MIDDINGS: HEAT, HOT AIR & STEAM; POWER: STEAM; FUEL: COAL; LIGHTS:
ELECTRIC I.E.P. ONE SINGLE WTD. & ONE DOUBLE WTD. & ONE
E.P. S. TWO "A" MIDS & HOSE AS NOTED. CITY WATER; BARRELS OF
WATER & PHILS DISTRIBUTED; GRINNELL AUTO SPRINKLERS, DRY
SYSTEM THROUGHOUT. PLANT EXCEPT IN AUTO. NO W. IRON STORAGE SHED
540 HEADS, SPACED 8" X 10", SUPPLIED BY G. CONN. TO CITY MAINS.
80 LBS. PRESSURE, GONG ALARM.

Scale of Feet.
0 50 100 150

Copyright 1918 by the Sanborn Map Co.

THE H. A. SIMONDS & SONS CO. NEGLEY
GRINDING & FINISHING
MACHINE SHOP
BLACK SM. SHOP
L.S.M. SLAB
CEMENT
SHIPPING
OFFICE
STORAGE

The Dayton Grinding Wheel Co.
- MFRS OF GRINDING WHEELS -
NIGHT & SUNDAY WATCHMAN, R.D.T. SYSTEM, 2 STATIONS HOURLY
MIDDINGS: HEAT, HOT AIR & STEAM; POWER: STEAM; FUEL: COAL; LIGHTS:
ELECTRIC I.E.P. ONE SINGLE WTD. & ONE DOUBLE WTD. & ONE
E.P. S. TWO "A" MIDS & HOSE AS NOTED. CITY WATER; BARRELS OF
WATER & PHILS DISTRIBUTED; GRINNELL AUTO SPRINKLERS, DRY
SYSTEM THROUGHOUT. PLANT EXCEPT IN AUTO. NO W. IRON STORAGE SHED
540 HEADS, SPACED 8" X 10", SUPPLIED BY G. CONN. TO CITY MAINS.
80 LBS. PRESSURE, GONG ALARM.

THE OTIS F. LAKE, COAL & ICE CO.
ICE NO. 1
ICE NO. 2
ICE NO. 3
ICE NO. 4
ICE NO. 5
ICE NO. 6
ICE NO. 7
ICE NO. 8
ICE NO. 9
ICE NO. 10
ICE NO. 11
ICE NO. 12
ICE NO. 13
ICE NO. 14
ICE NO. 15
ICE NO. 16
ICE NO. 17
ICE NO. 18
ICE NO. 19
ICE NO. 20
ICE NO. 21
ICE NO. 22
ICE NO. 23
ICE NO. 24
ICE NO. 25
ICE NO. 26
ICE NO. 27
ICE NO. 28
ICE NO. 29
ICE NO. 30
ICE NO. 31
ICE NO. 32
ICE NO. 33
ICE NO. 34
ICE NO. 35
ICE NO. 36
ICE NO. 37
ICE NO. 38
ICE NO. 39
ICE NO. 40
ICE NO. 41
ICE NO. 42
ICE NO. 43
ICE NO. 44
ICE NO. 45
ICE NO. 46
ICE NO. 47
ICE NO. 48
ICE NO. 49
ICE NO. 50
ICE NO. 51
ICE NO. 52
ICE NO. 53
ICE NO. 54
ICE NO. 55
ICE NO. 56
ICE NO. 57
ICE NO. 58
ICE NO. 59
ICE NO. 60
ICE NO. 61
ICE NO. 62
ICE NO. 63
ICE NO. 64
ICE NO. 65
ICE NO. 66
ICE NO. 67
ICE NO. 68
ICE NO. 69
ICE NO. 70
ICE NO. 71
ICE NO. 72
ICE NO. 73
ICE NO. 74
ICE NO. 75
ICE NO. 76
ICE NO. 77
ICE NO. 78
ICE NO. 79
ICE NO. 80
ICE NO. 81
ICE NO. 82
ICE NO. 83
ICE NO. 84
ICE NO. 85
ICE NO. 86
ICE NO. 87
ICE NO. 88
ICE NO. 89
ICE NO. 90
ICE NO. 91
ICE NO. 92
ICE NO. 93
ICE NO. 94
ICE NO. 95
ICE NO. 96
ICE NO. 97
ICE NO. 98
ICE NO. 99
ICE NO. 100

THE CORDOVA APARTMENTS
THE FLORAL

Wolf Creek