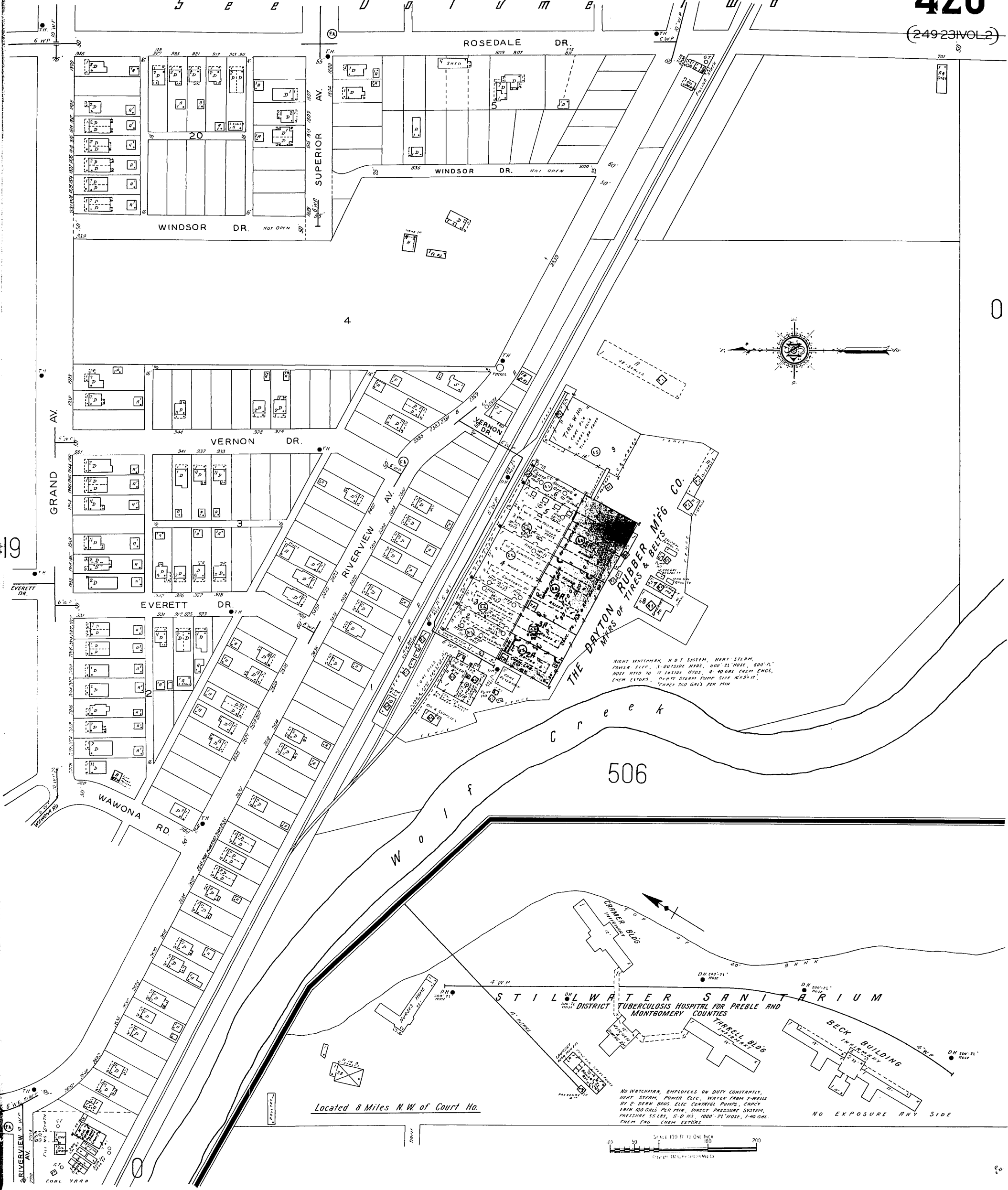


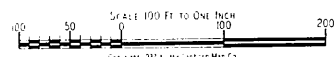
S E E U U I U M E T W D



RIGHT WATCHMAN, H. D. T. SYSTEM, HEAT STERN,
POWER ELEC., 3 OUTSIDE HYDS., 800' 21" HOSE, 600' 11"
HOSE BIDD TO 17' INSIDE HYDS., 4 40 GAL CHEM ENGS.,
CHEM EXTORS, PLANT STEAM PUMP SIZE 12 3/4" IT,
TRAPED 2500 GALS PER MIN

NO WATCHMAN, EMPLOYEES ON DUTY CONSTANTLY,
HEAT STERN, POWER ELEC., WATER FROM 2 WELLS
BY 2 DEAN 1000 ELEC CENTRIFUGAL PUMPS, CAPACITY
FROM 60 GALS PER MIN, DIRECT PRESSURE SYSTEM,
PRESSURE 55 LBS., 5-D H.S., 1000' 21" HOSE, 1-40 GAL
CHEM EXTORS

Located 8 Miles N.W. of Court Ho.



19

0

24