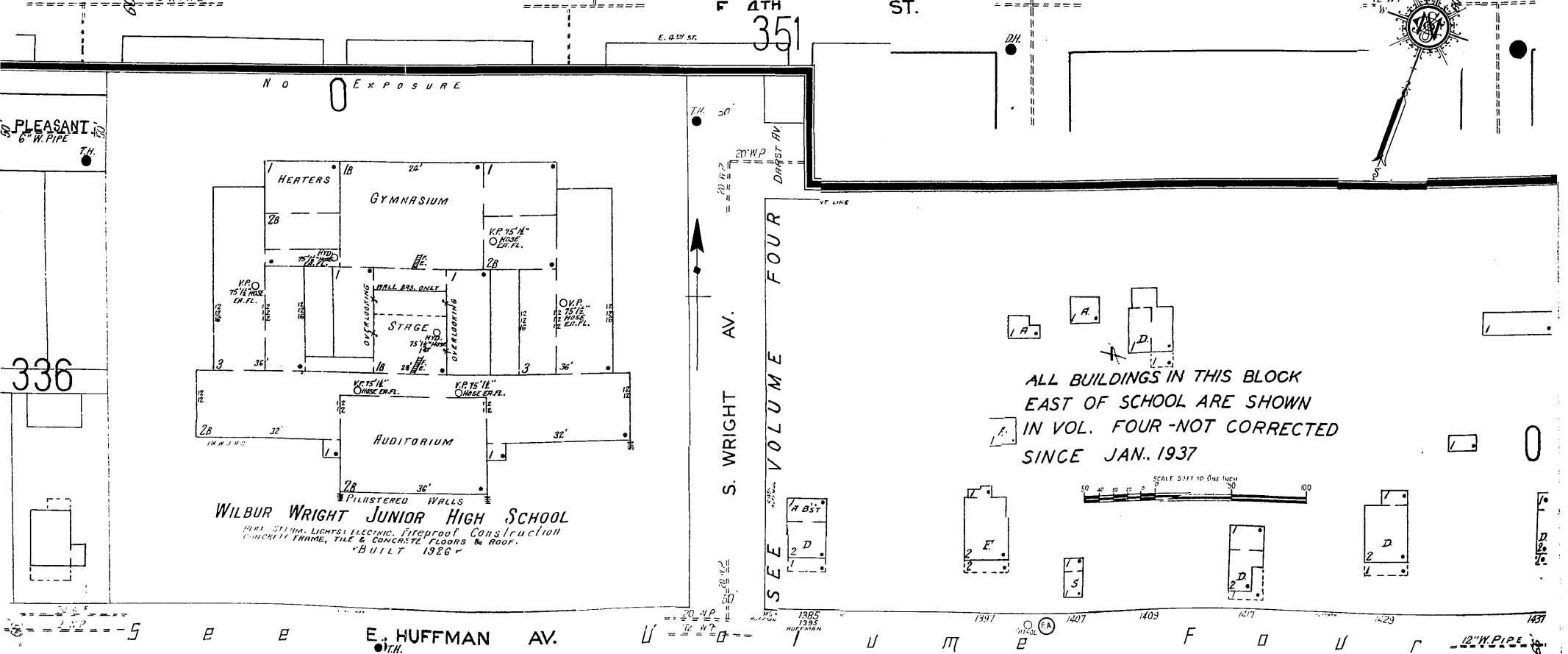
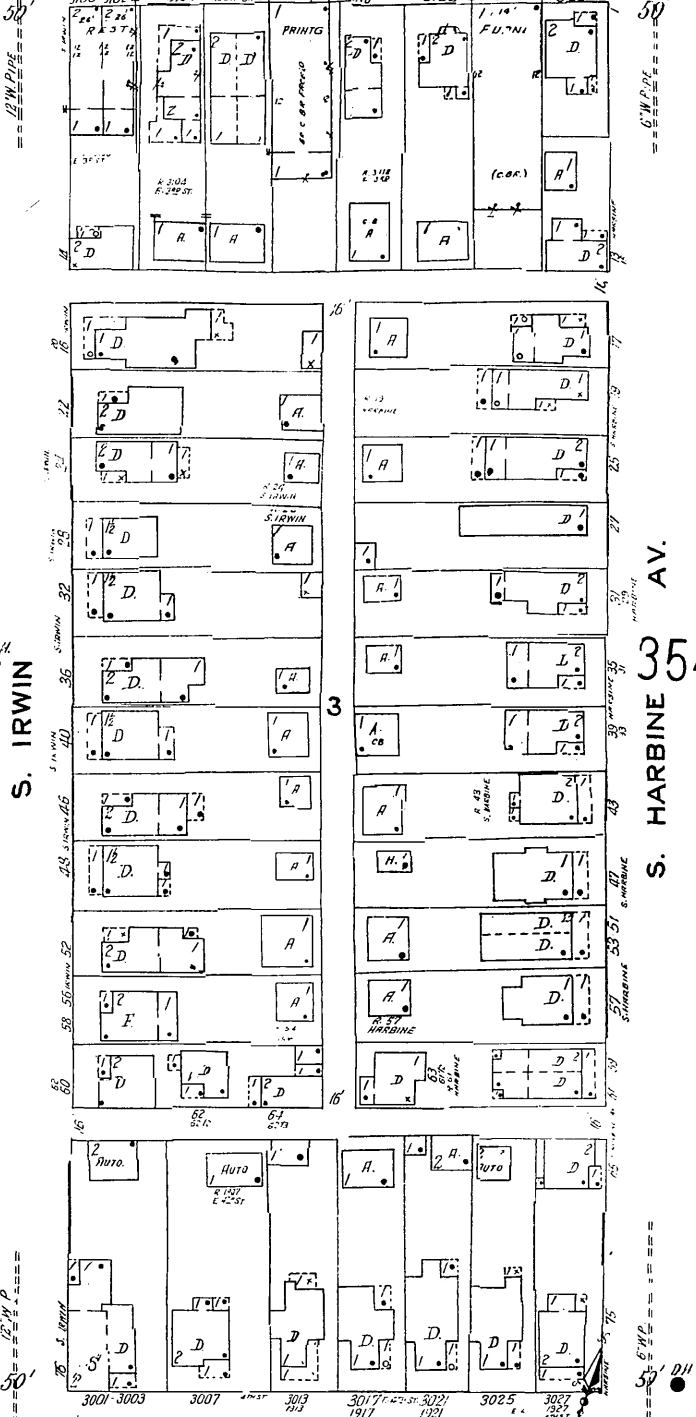
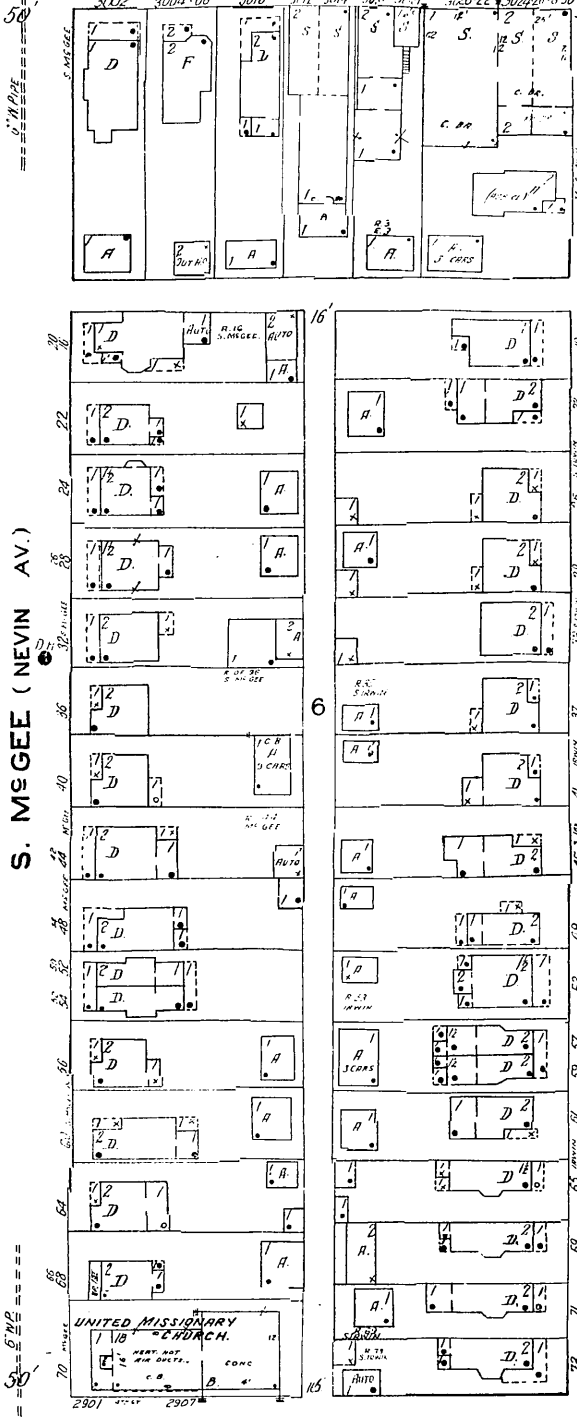
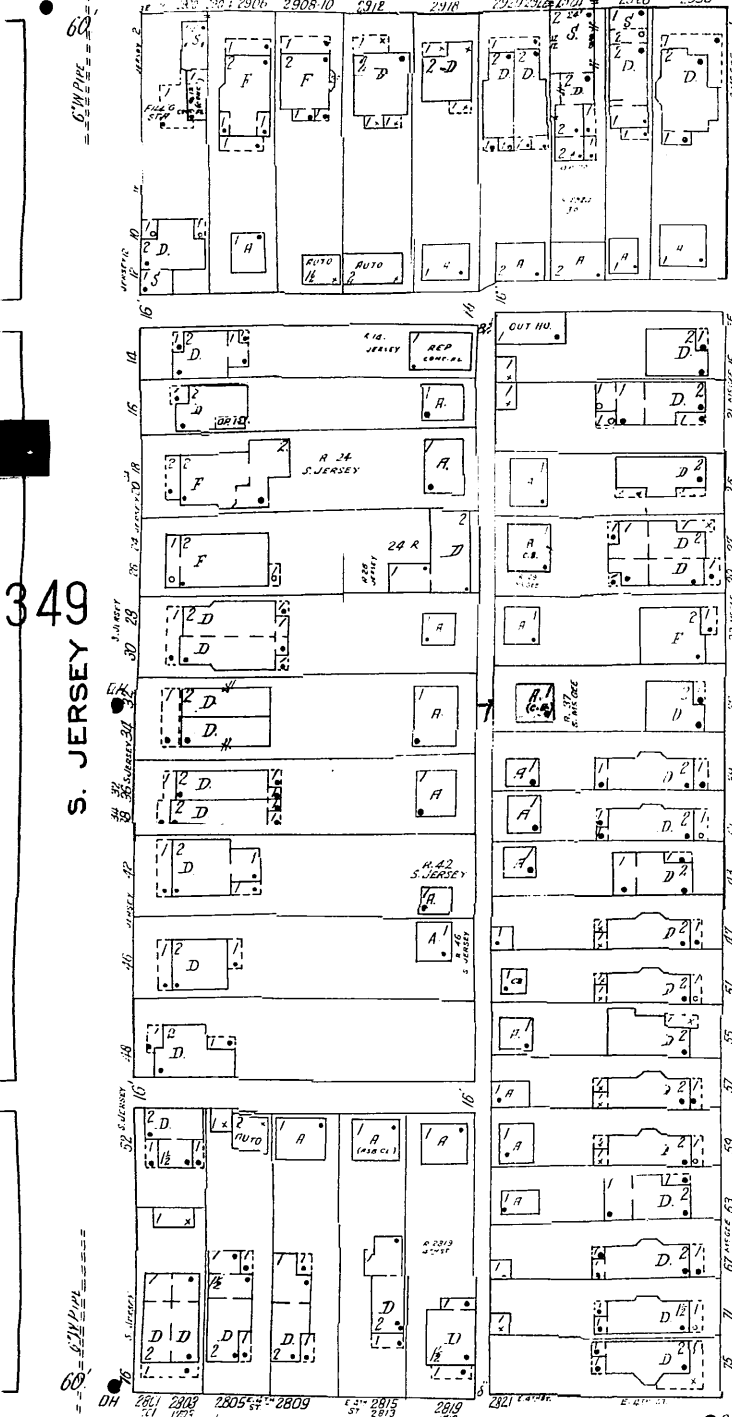


N. JERSEY ST. DRYTON, O., VOL. 3  
**353**  
(83 VOL. 2)

**356**

**357**

E. 3RD ST.



E. HUFFMAN AV.

S. WRIGHT AV.

SEE VOLUME FOUR

ALL BUILDINGS IN THIS BLOCK EAST OF SCHOOL ARE SHOWN IN VOL. FOUR - NOT CORRECTED SINCE JAN. 1937

SCALE 50 FT TO ONE INCH