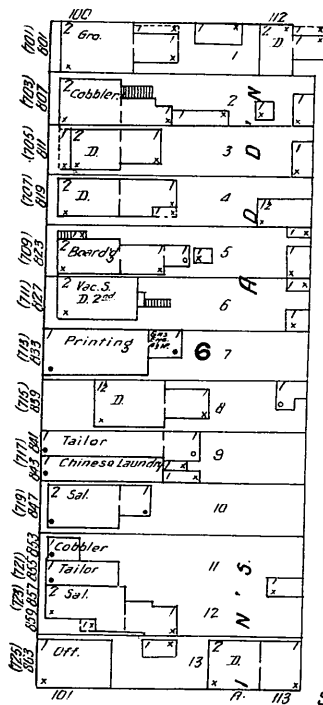


9

10

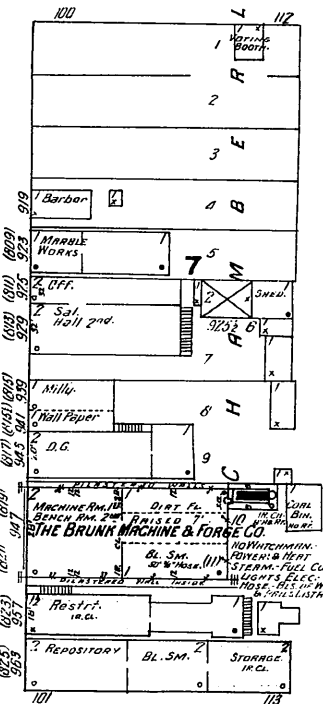
FEB. 1910.
LORAIN
OHIO.

88' E. 8TH ST. (1ST AV.)



SCHLITZ BREWING CO.

86' E. 9TH ST. (2ND AV.)



66' E. 10TH ST. (3RD AV.)

13

LORAIN LUMBER & MFG CO.
PLANING MILL & LUMBER YARD

3 1/2 MILLION FEET OF LUMBER - AMER. TIME DETECTOR, 8 STATIONS
HOURLY ROUNDS - HEAT & POWER - STEAM - FUEL - COAL & WASTE
LIGHTS - ELEC. - GRINNELL AUTO. SPRINKLERS DRY SYSTEM - HEADS SPACED
8' x 10' - PRESSURE 15 LBS. FROM W.T. ELEV. 20' AB. R.F. & SUPPLIED BY
CITY MAIN - CAPCY. OF TANK 3,000 GALS. - BLS. OF WATER & PAISL. DISTRIB.
400' 2 1/2" HOSE - 5 MILLER EXTENS.

Scale of Feet.
0 50 100 150

NEW YORK, CHICAGO & ST. LOUIS R.R.

Map of Lorain
OHIO
AUG 12 '55
Library of C...