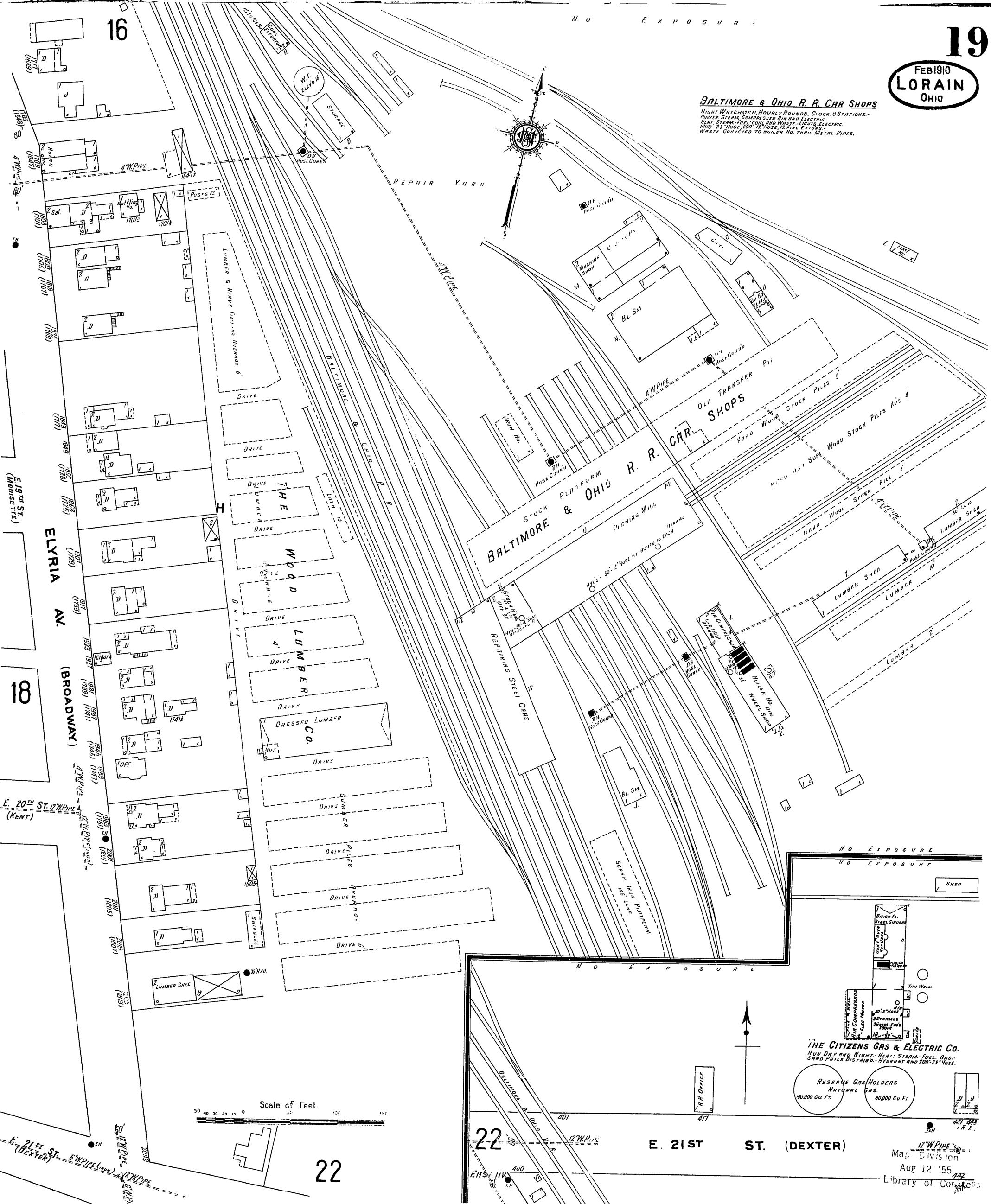


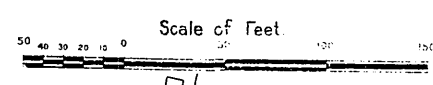
BALTIMORE & OHIO R. R. CAR SHOPS
NIGHT WATCHMEN: HOURS: ROUNDS, CLOCK, STATIONS.
POWER, STEAM, COMPRESSED AIR AND ELECTRIC.
HEAT: STEAM-FUEL: COAL AND WASTE-LIGHTS: ELECTRIC.
WATER: 2 1/2" HOSE, 500-12 HOSE, 12 FIRE EXTINGUISHERS.
WASTE CONVEYED TO DRAIN NO. THRU METAL PIPES.



THE CITIZENS GAS & ELECTRIC CO.
RUN DAY AND NIGHT. HEAT: STEAM-FUEL: GAS-SAND PILES DISTRIBUTED-HYDRANT AND 200' HOSE.

RESERVE GAS HOLDERS
NATURAL GAS. 30,000 CU. FT.
30,000 CU. FT.

Map Division
Aug 12 '55
Library of Congress



16

18

22

E. 21ST ST. (DEXTER)

Aug 12 '55
Library of Congress