

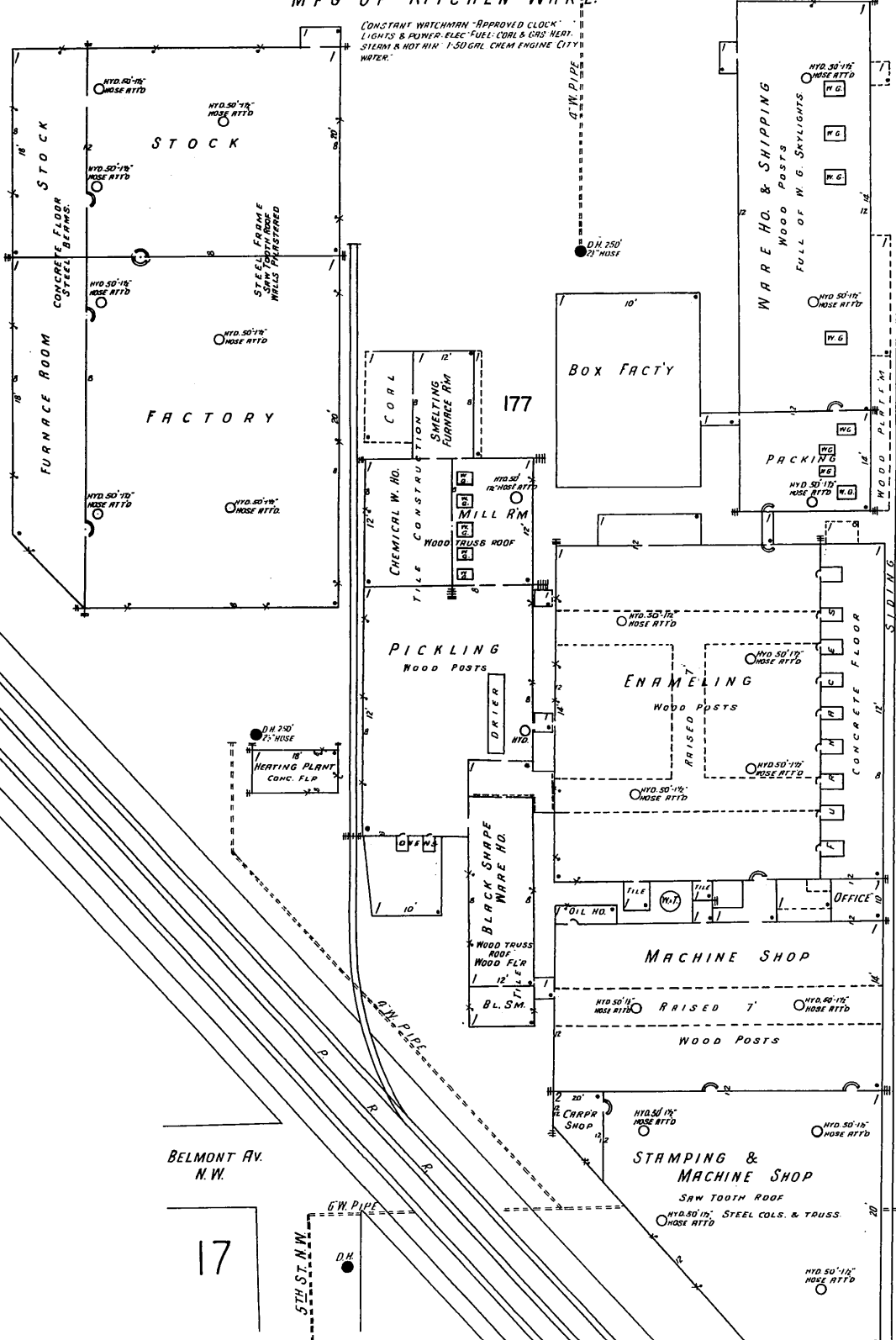
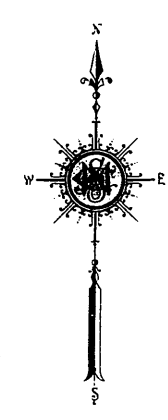
19

19

JUNE 1928.  
NEW PHILADELPHIA  
OHIO.

**BELMONT STAMPING & ENAMELING CO.**  
MFG OF KITCHEN WARE.

CONSTANT WATCHMAN "APPROVED CLOCK"  
LIGHTS & POWER. ELEC. FUEL: COAL & GAS. HEAT:  
STEAM & HOT AIR. 1-50 GAL. CHEM. ENGINE CITY  
WATER.



BELMONT AV. N.W.

BOWERS AV. N.W. (BOWERS)

UNPAVED

ROSS AV. N.W. (ROSS)

KADERLY N.W. (KADERLY)

ST. N.W. (BOULEVARD)

17

96  
(11A)

