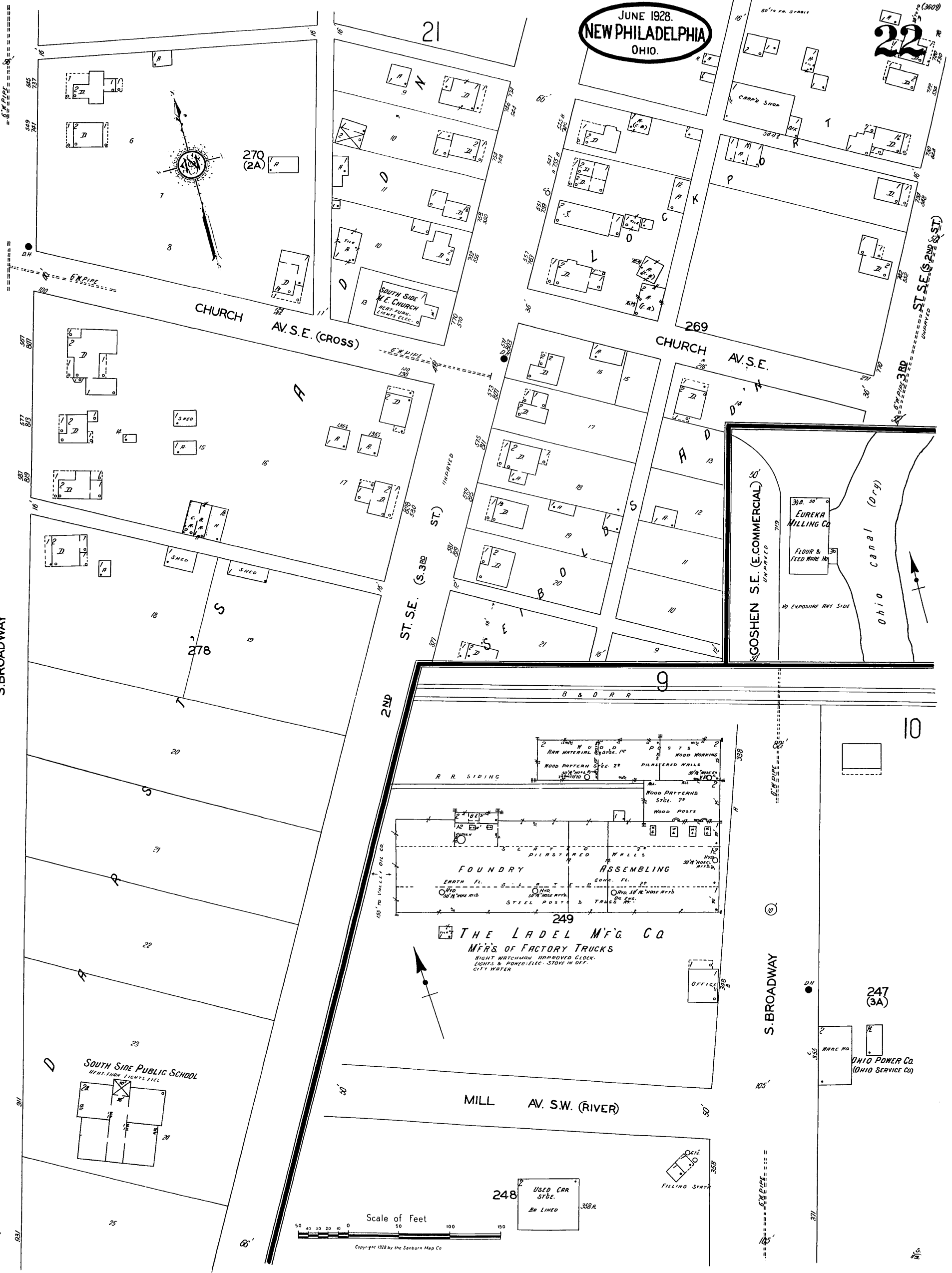
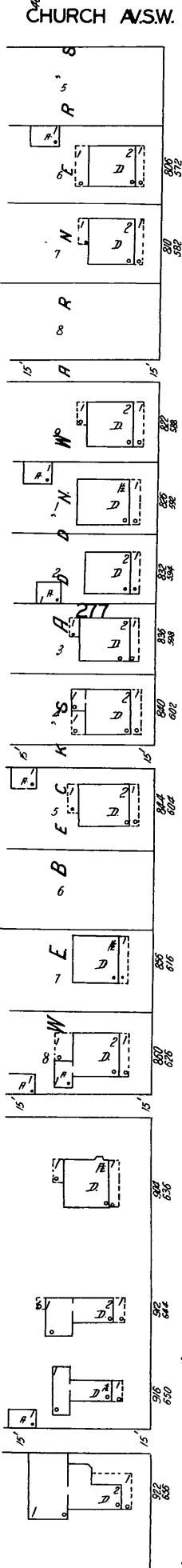
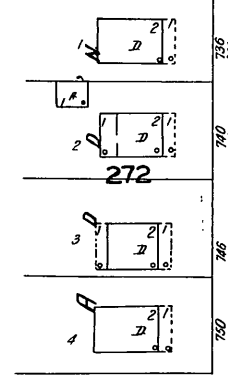


22

JUNE 1928.
NEW PHILADELPHIA
OHIO.

22



S. BROADWAY

CHURCH AV. S.E. (CROSS)

CHURCH AV. S.E.

ST. S.E. (S. 3RD ST.)

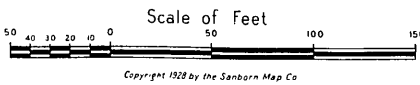
GOSHEN S.E. (COMMERCIAL)

249
THE LAEDEL MFG. CO
MFR'S OF FACTORY TRUCKS
NIGHT WATCHMAN IMPROVED CLOCK-
LIGHTS & POWER ELEC. STOVE IN OFF.
CITY WATER

SOUTH SIDE PUBLIC SCHOOL
HEAT-FURN. LIGHTS ELEC.

247
(3A)
OHIO POWER Co.
(OHIO SERVICE Co)

MILL AV. S.W. (RIVER)



Copyright 1928 by the Sanborn Map Co