

JUNE 1928.  
NEW PHILADELPHIA  
OHIO.

TUSCARAWAS COUNTY INFIRMARY  
HEAT STEAM FUEL COAL LIGHTS ELECTRIC

J. F. GERBER & CO  
CHEESE WARE HD

RENNARDS BAKERY  
FILE POWER ELEC

Located 2 1/2 Miles S.E. of Court Ho  
NO EXPOSURE ANY SIDE

BROWN COAL MINING CO.  
NO WATCHMAN LIGHT & POWER ELEC  
NO FIRE APPS

THE ONLY SAUSAGE CO.  
LIGHT & POWER ELEC  
HEAT FURN

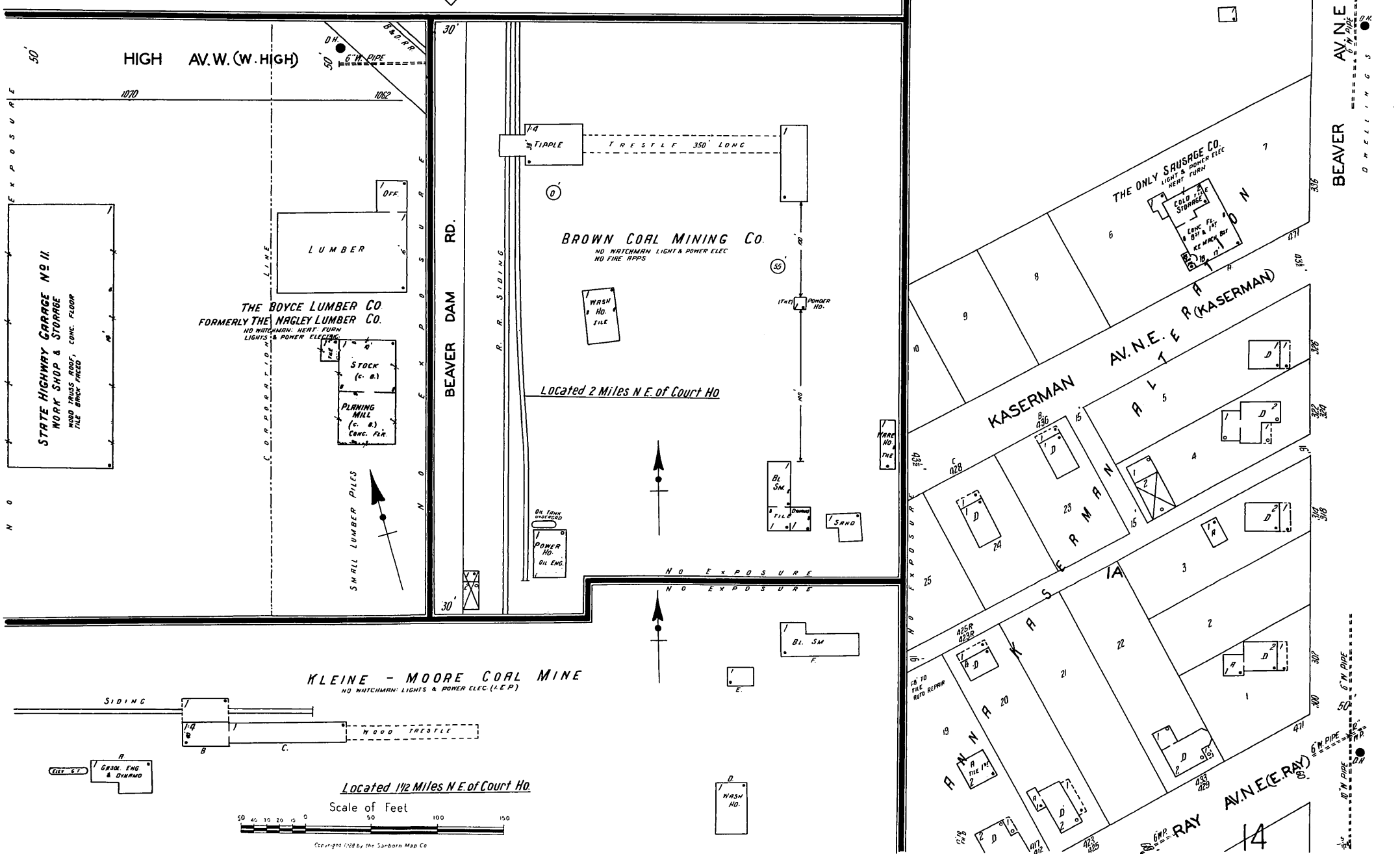
THE BOYCE LUMBER CO.  
FORMERLY THE NAGLEY LUMBER CO.  
NO WATCHMAN HEAT FURN  
LIGHTS & POWER ELEC

KASERMAN AV. N.E. (KASERMAN)

KLEINE - MOORE COAL MINE  
NO WATCHMAN LIGHTS & POWER ELEC (L.P.)

RAY AV. N.E. (RAY)

BEAVER AV. N.E. (BEAVER AV)



Located 1/2 Miles N.E. of Court Ho

Scale of Feet

