

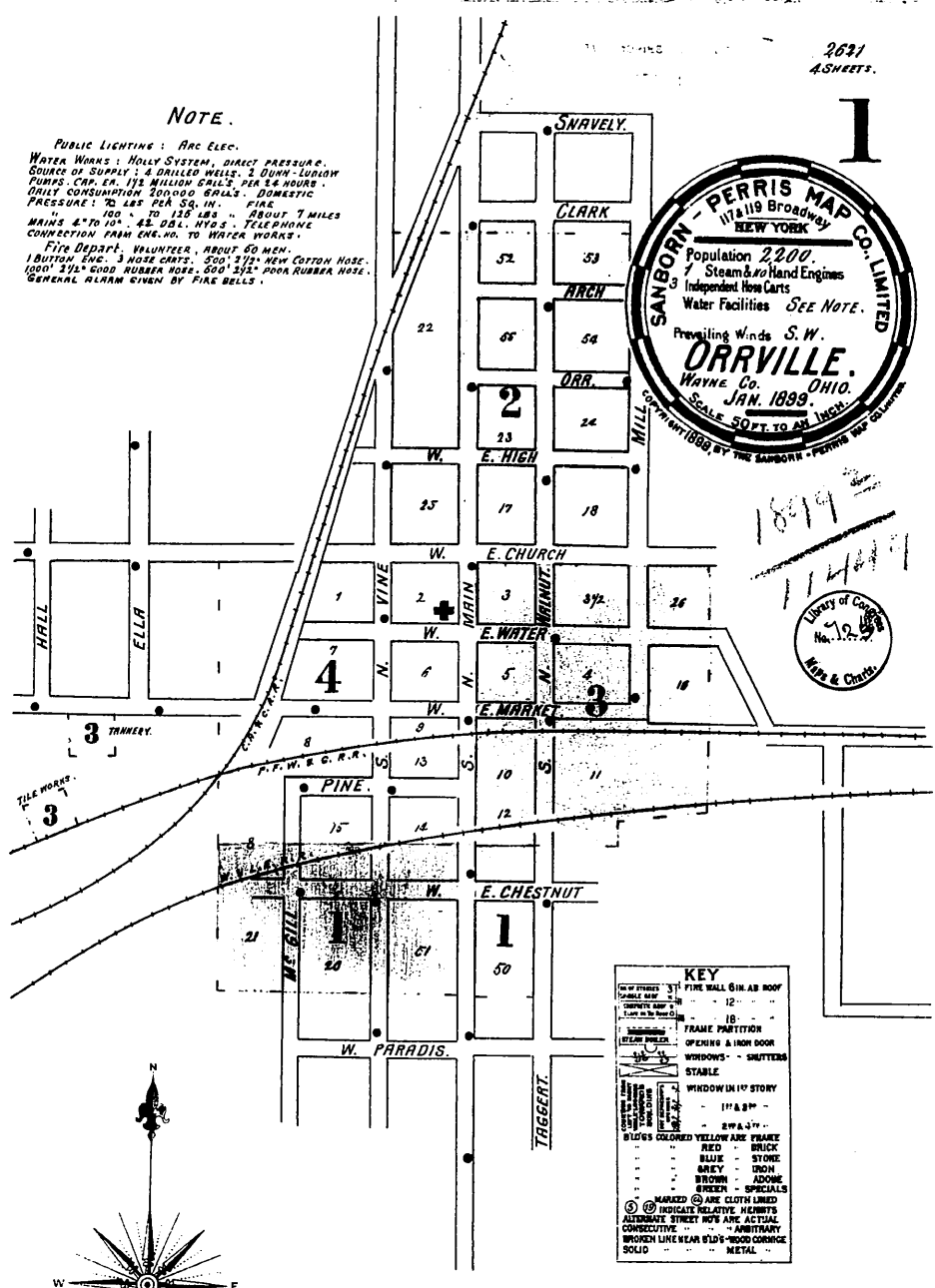
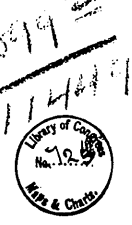
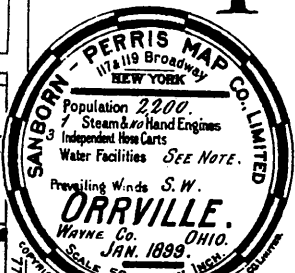
INDEX.

SPECIALS.

Arnold's Saw Mill,.....	1
Baughman Mfg Co.,.....	4
Christy Block,.....	3
O. A. & C. R. R. Dep't & Loco. Ho.,.....	4
Dyale, F., Heira, Tannery,.....	3
E. L. Church,.....	4
German Lutheran Church,.....	3
" Reformed, ".....	3
Hurd Hotel,.....	4
Mansion House,.....	4
Methodist Episcopal Church,.....	2
Myers, T. P., Wagon Shop,.....	3
National Hotel,.....	4
O'Ferrell, L., Mrs., Estate,.....	3
Orr, W. N., Warehouse,.....	4
Orrville Crescent Printing,.....	3
" Light, Heat & Power Co.,.....	1
" Machine Co.,.....	4
" Milling Co.,.....	3
" Planing Mill Co.,.....	1
" Tannery,.....	3
P. F. W. & C. R. R. Depot,.....	4
Presbyterian Church,.....	2
Public School,.....	2
Strauss Griffith Building,.....	4
Town Hall,.....	4
W. & L. E. R. R. Depot,.....	1
Wirth Block,.....	4

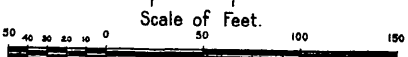
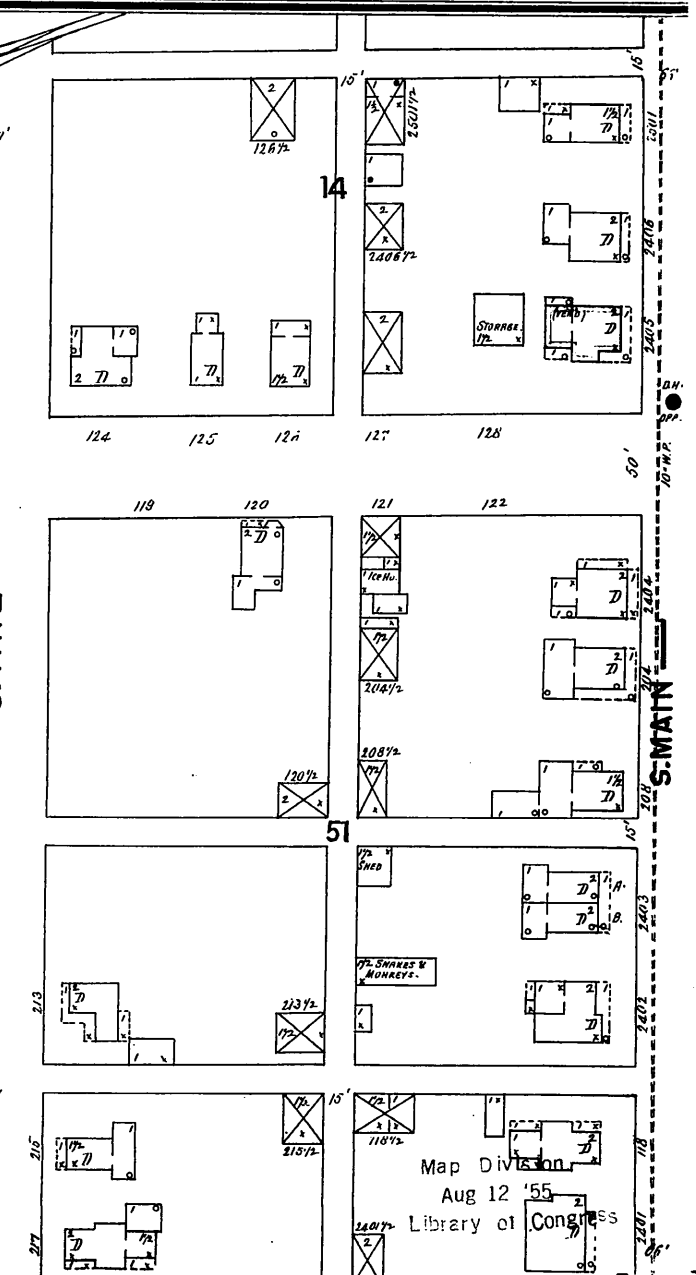
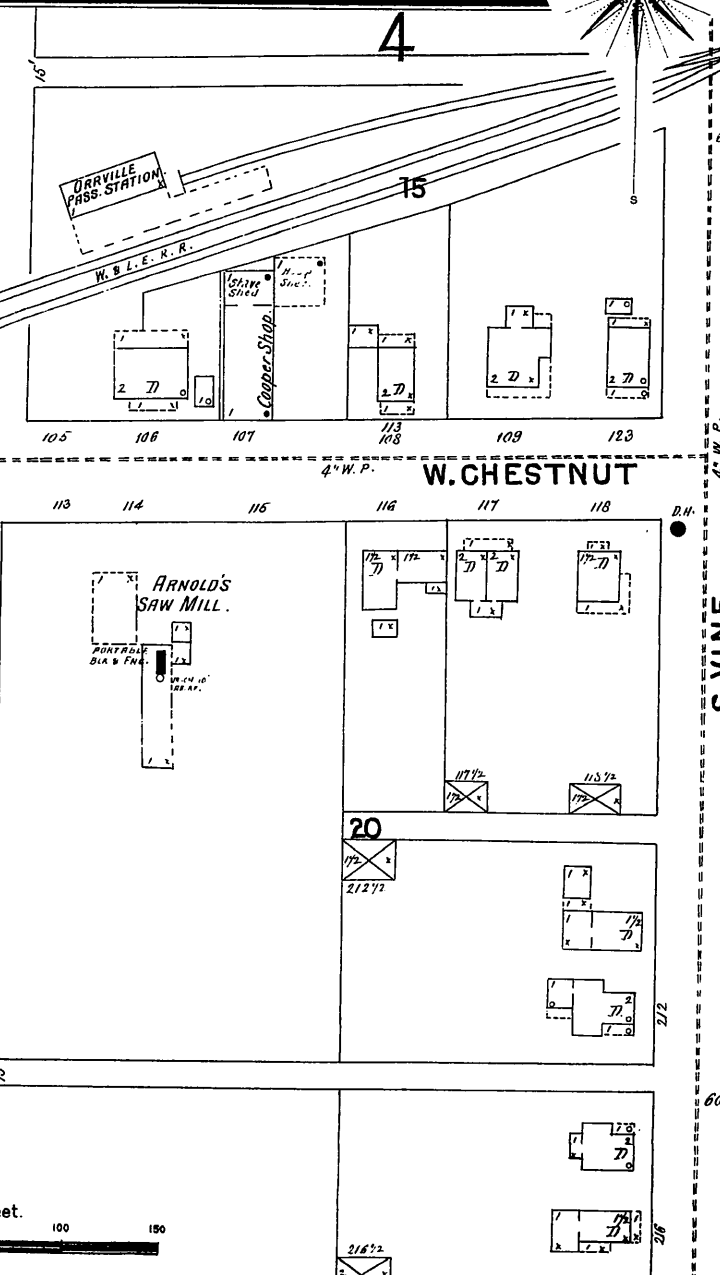
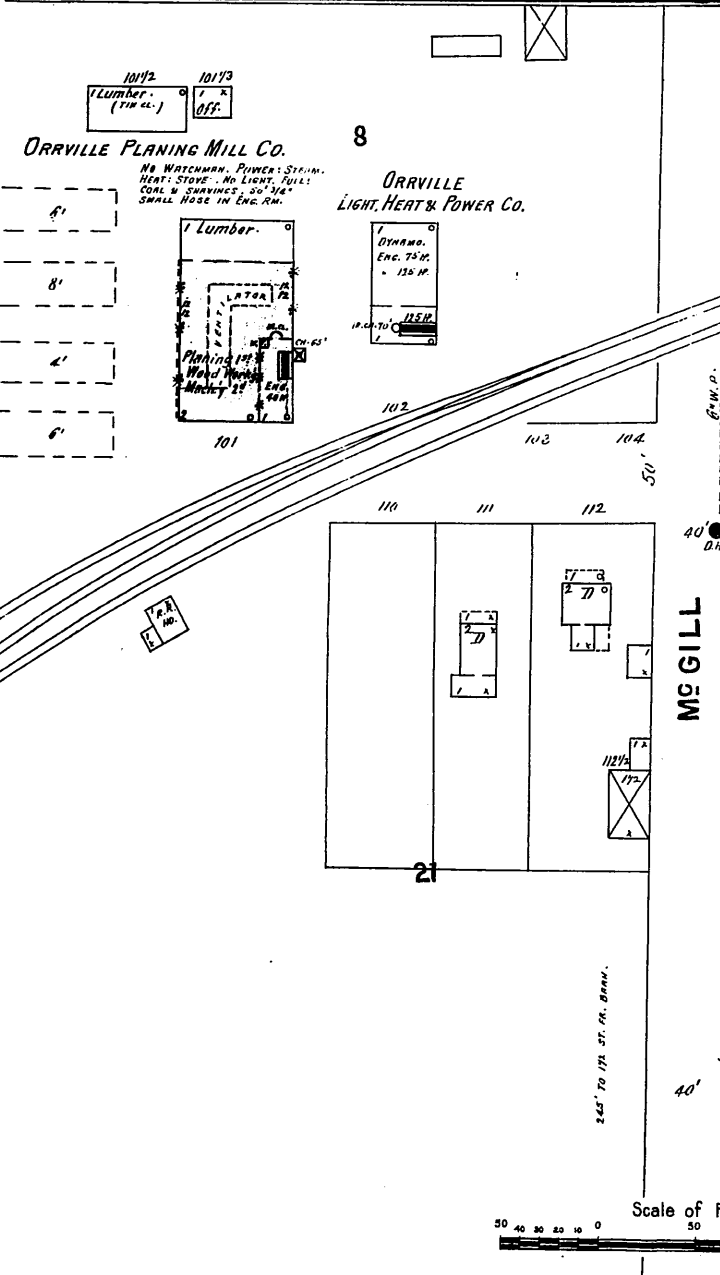
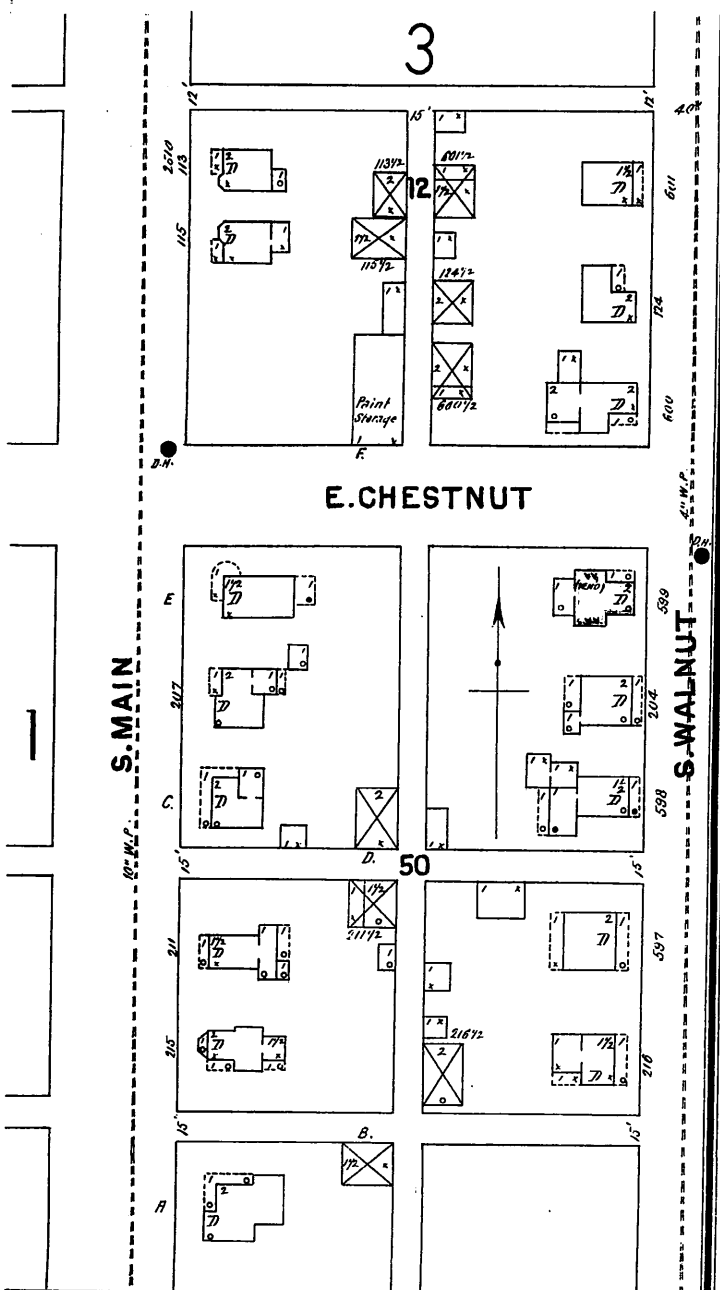
NOTE.

PUBLIC LIGHTING: Arc Elec.
 WATER WORKS: HOLY SYSTEM, DIRECT PRESSURE.
 SOURCE OF SUPPLY: 4 DRILLED WELLS, 2 QUINCY-TYPE
 PUMPS, CAP. EN. 175 MILLION GALLS. PER 24 HOURS.
 DAILY CONSUMPTION 200,000 GALLS. DOMESTIC
 PRESSURE: 70 LBS. PER SQ. IN. FIRE
 " " 100 " 125 LBS. " " ABOUT 7 MILES
 MAINS 2" TO 10" 45 GAL. HYDOS. TELEPHONE
 CONNECTION FROM ENCL. NO. TO WATER WORKS.
 FIRE DEPT: VOLUNTEER, ABOUT 60 MEN.
 1 BOSTON ENG. 3 HOSE CARRS. 200' 2 1/2" NEW COTTON HOSE.
 1000' 1 1/2" GOOD RUBBER HOSE. 500' 2 1/2" ANNA RUBBER HOSE.
 GENERAL ALARM GIVEN BY FIRE BELLS.



KEY

1	FIRE WALL 6 IN. AS ROOF
2	CONCRETE
3	BRICK
4	STONE
5	IRON
6	ADONE
7	SPECIALS
8	CLAY
9	WOOD
10	GLASS
11	GLASS COLORED YELLOW ARE FRAMES
12	RED - BRICK
13	BLUE - STONE
14	GREY - IRON
15	BROWN - ADONE
16	GREEN - SPECIALS
17	MARKED (C) ARE CLOTH LINED
18	(S) INDICATE RELATIVE HEIGHTS
19	ALTERNATE STREET WYS ARE ACTUAL
20	CONSECUTIVE - ARBITRARY
21	BROWN LINE NEAR WYS - WOOD CORROSE
22	SOLID - METAL



Map Division
 Aug 12 '55
 Library of Congress