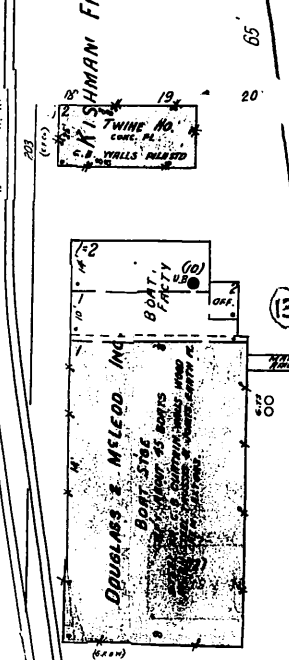
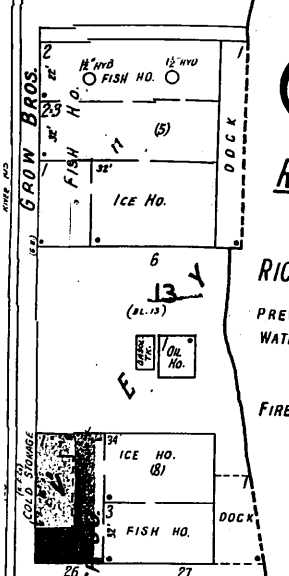
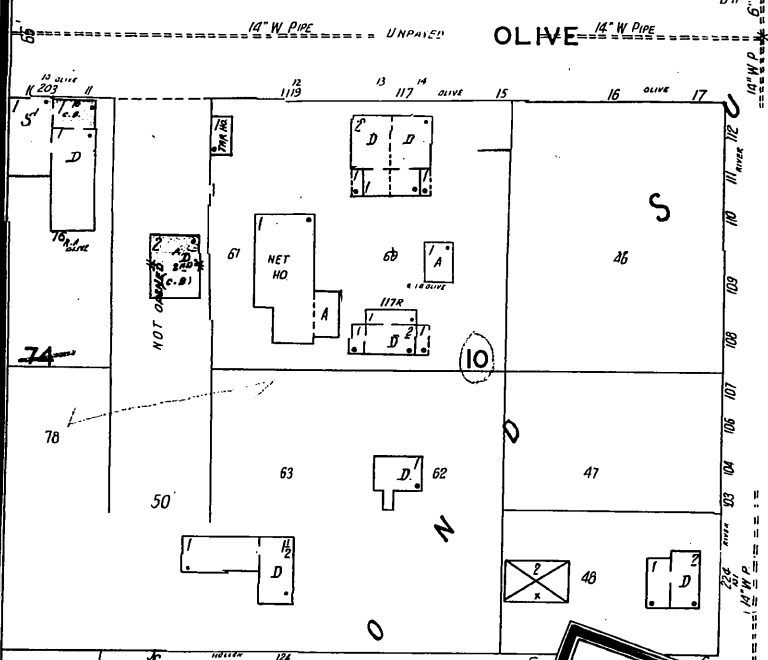
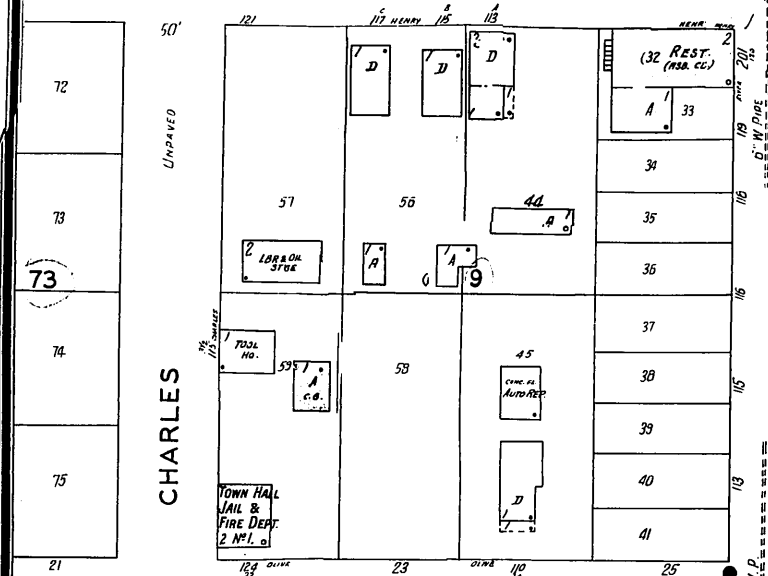


OHIO 533

UNPAVED HENRY

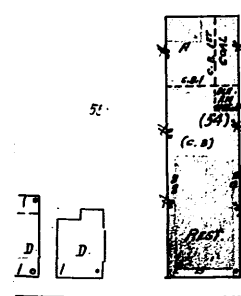
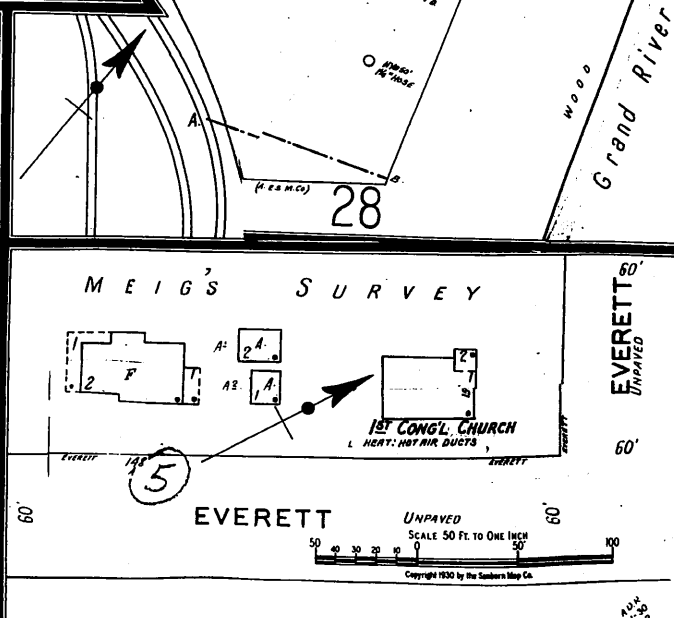
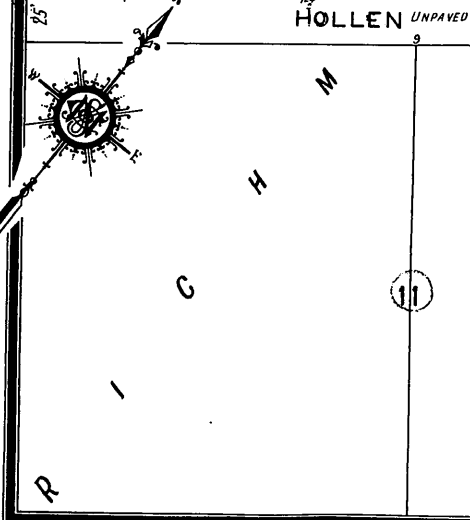
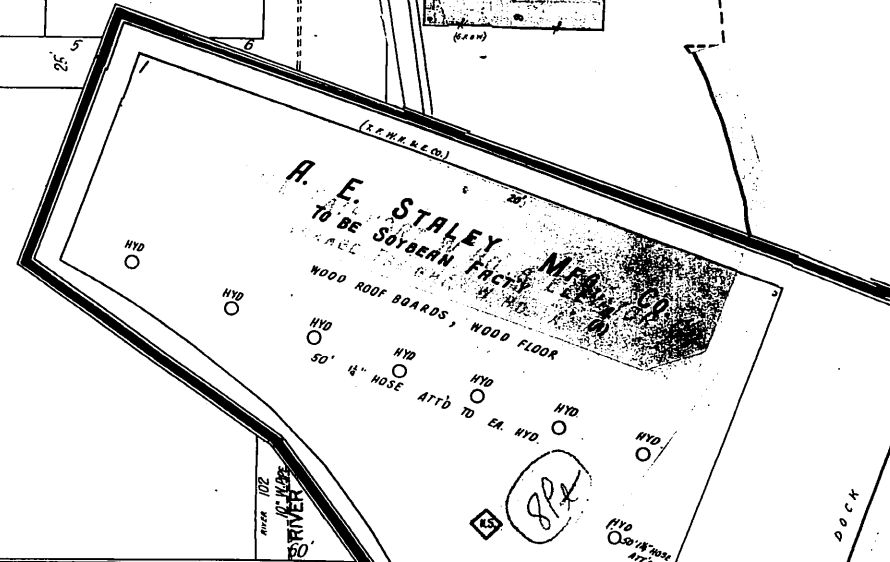
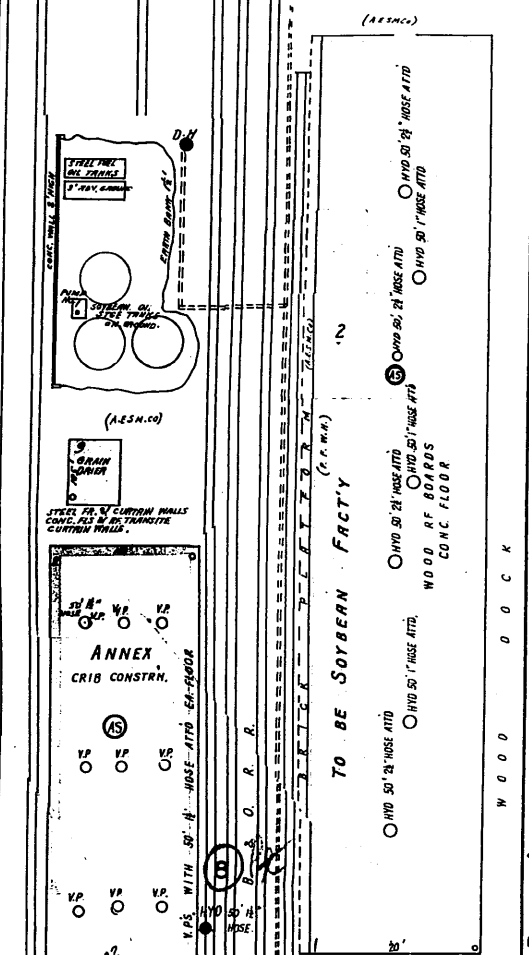


**JAN. 1930**  
**PAINESVILLE**  
 OHIO  
**RICHMOND**

**RICHMOND LAKE COUNTY O.**  
 POPULATION 300  
 PREVAILING WINDS. N. W.  
 WATER FACILITIES:  
 Water supply from Painesville  
 water works system, 1/2 mile of  
 6" to 14" pipe, 4 D.H.  
 FIRE DEPARTMENT:  
 Volunteer, 1 chief, 15 men, paid  
 by call, 2 Fire Stations, Station  
 No. 1, 1 hose cart 500' 2 1/2" hose  
 No. 2, 1 hose cart 500' 2 1/2" hose,  
 fire alarm, telephone & bell at  
 Town Hall,  
 1/2 mile of paving, grades level  
 Public lights, electric.

Grand River

**A. E. STALEY MFG. CO.**  
 MFRS. SOYBEAN MEAL & ETC.  
 LIGHTS & POWER, ELEC. PARTS, STEAM, AIR, COMB. ENGRS. & MECHS., CITY  
 WATER SUPPLY, P. & C. CO. 250 GALL. PER MIN. ELECT. VALVES CONTROL PUMP  
 IN ALL PARTS OF PLANT (C. E. M. & E. CO.)



HENRY 28

UNPAVED  
 SCALE 50 FT TO ONE INCH  
 Copyright 1930 by the Salsbery Map Co.