

7

BOND

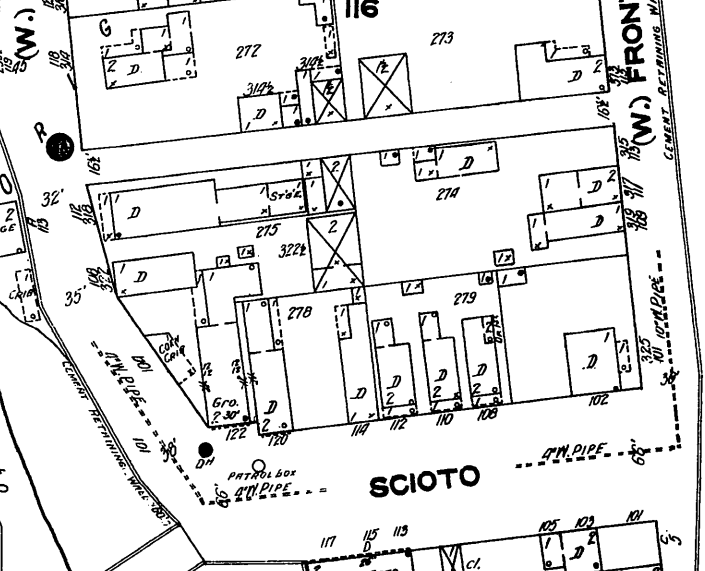
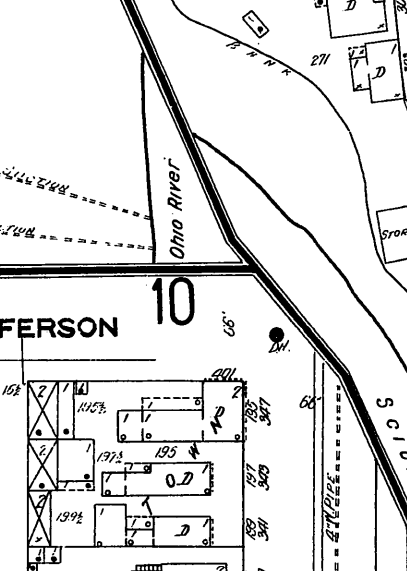
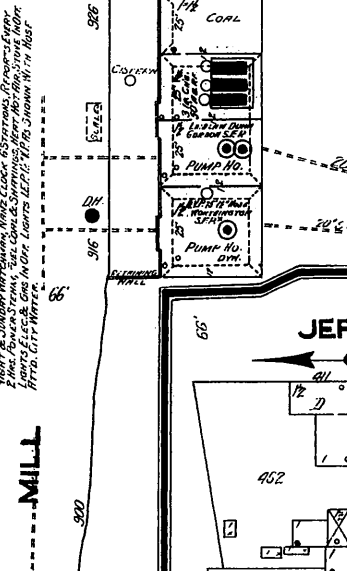
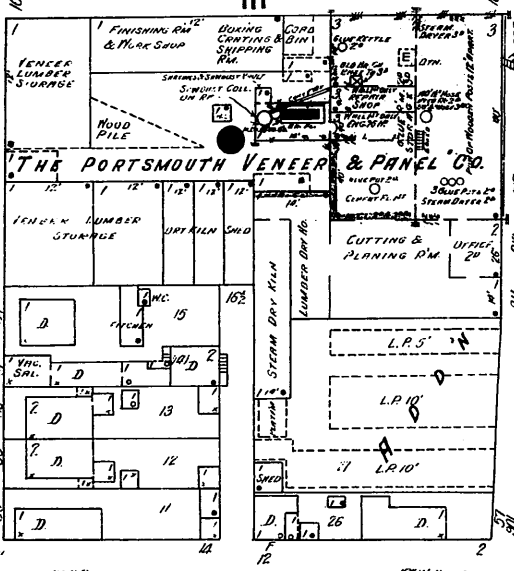
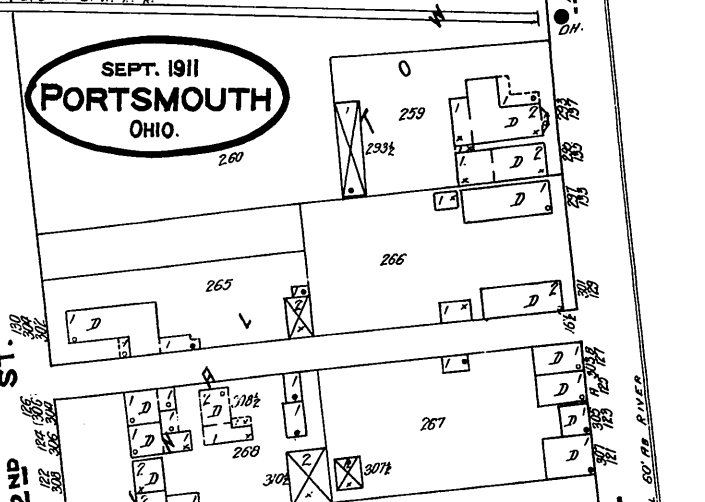
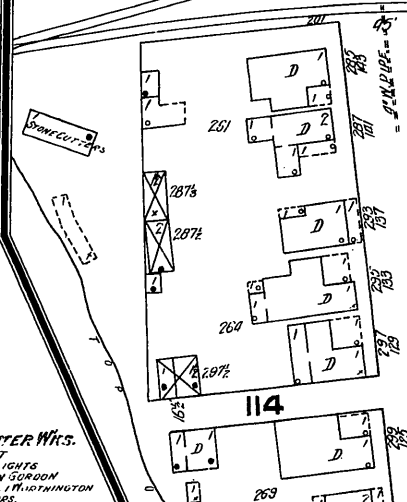
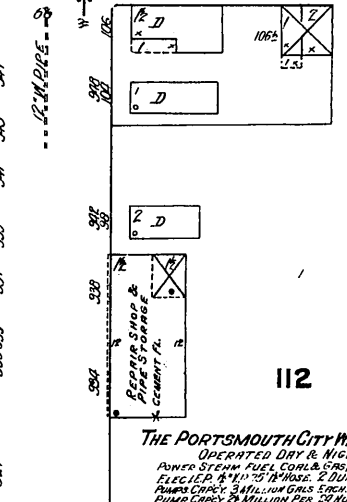
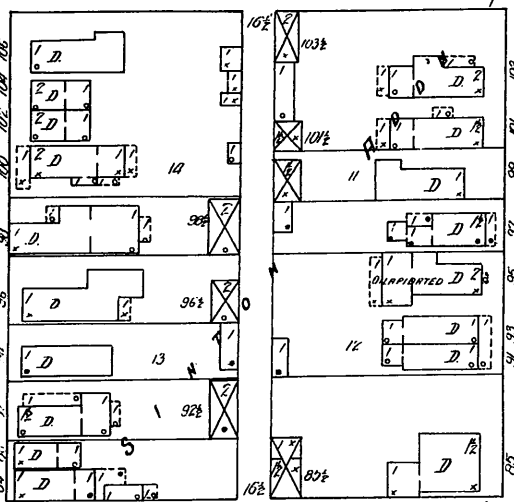
3

MASSIE

2

SEPT. 1911
PORTSMOUTH
OHIO.

THE PORTSMOUTH CITY WATER WKS.
ONE PART DRY & NIGHT
POWER STEAM FUEL COAL & GAS, LIGHTS
ELECT. E.P. 4" 10" 15" HOSE, 2 DUNN GORDON
PUMPS CAPACITY 3 MILLION GALS. SCALE 1 1/2 IN. WITH 1000
PUMP CAPACITY & MILLION GALS. 59 HOURS.



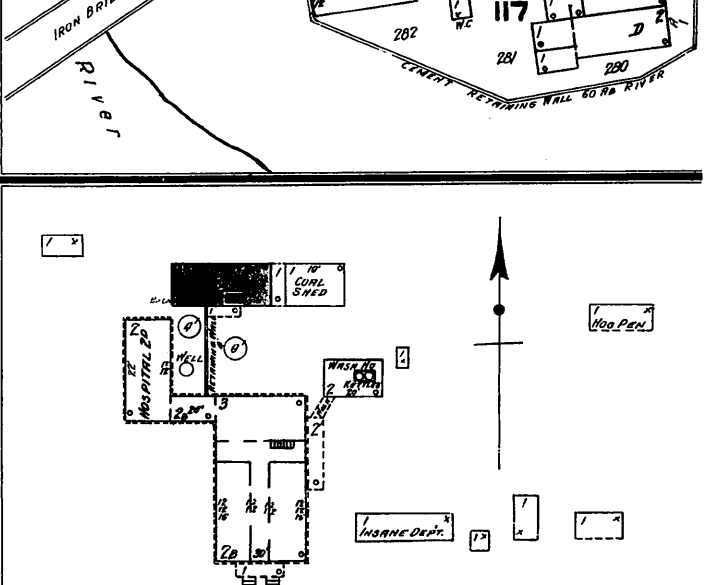
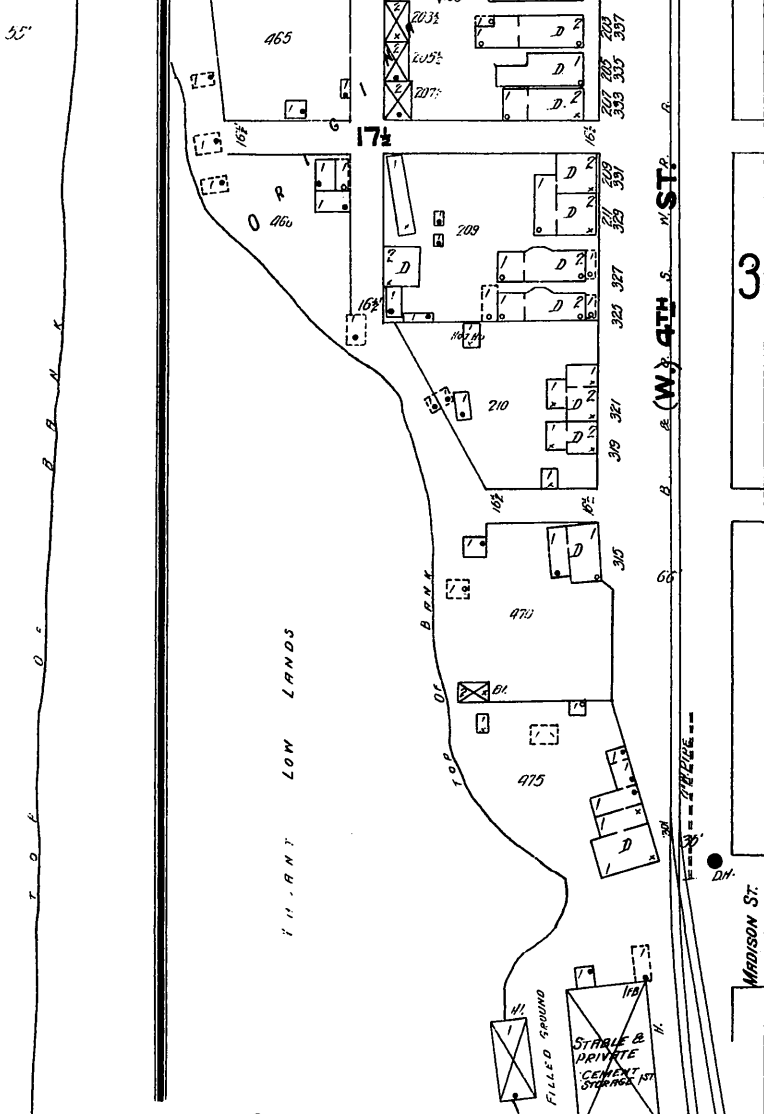
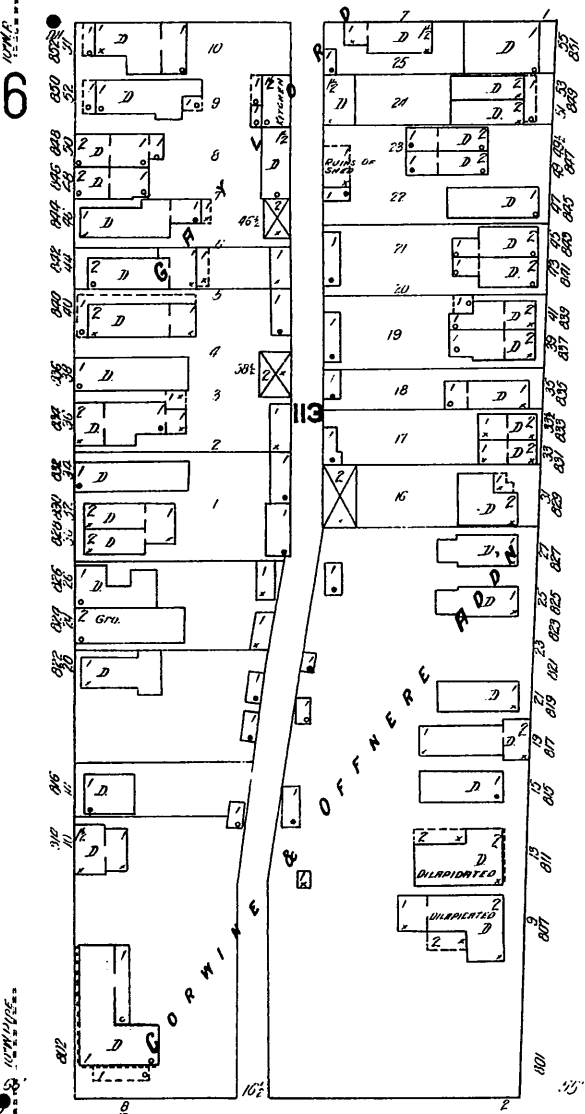
(E.) FRONT

MILL

GAY

JEFFERSON 10

SCIOTO

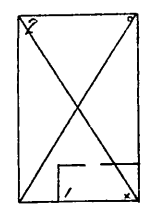
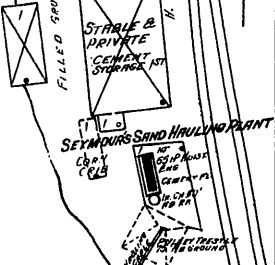
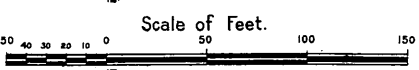


SCIOTO COUNTY INFIRMARY
BUILT 1883
HEAD STEAM LIGHTS GASOL. 1100W
3 MILLER EXTRACT.

PORTSMOUTH & BUENA VISTA PIKE

CHILICOTHE

YORK PUBLIC PARK



Located 3 Miles W of Portsmouth

Map of Ohio
1885

E X H O S U R E