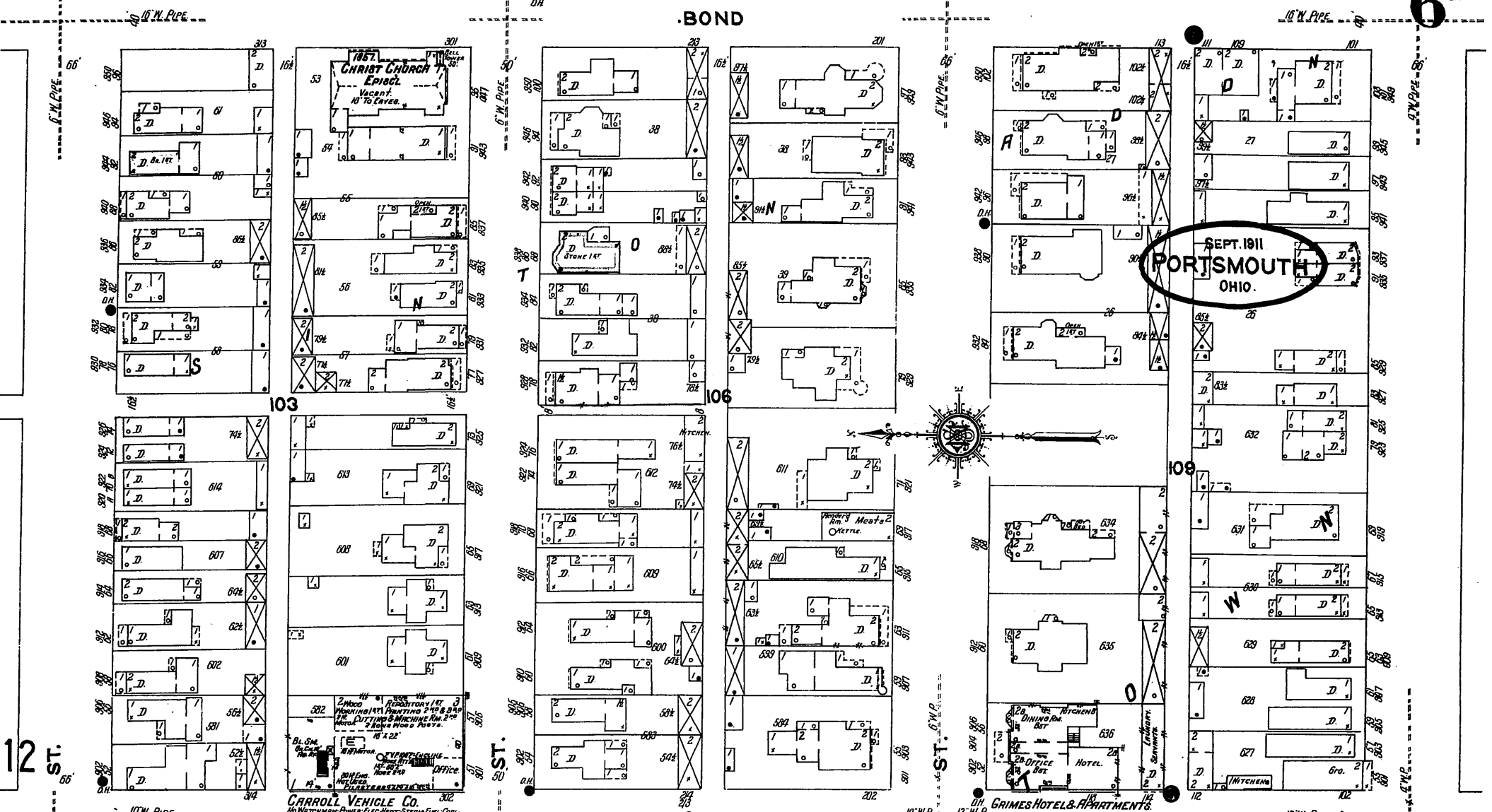


BOND

SEPT. 1911
PORTSMOUTH
OHIO.

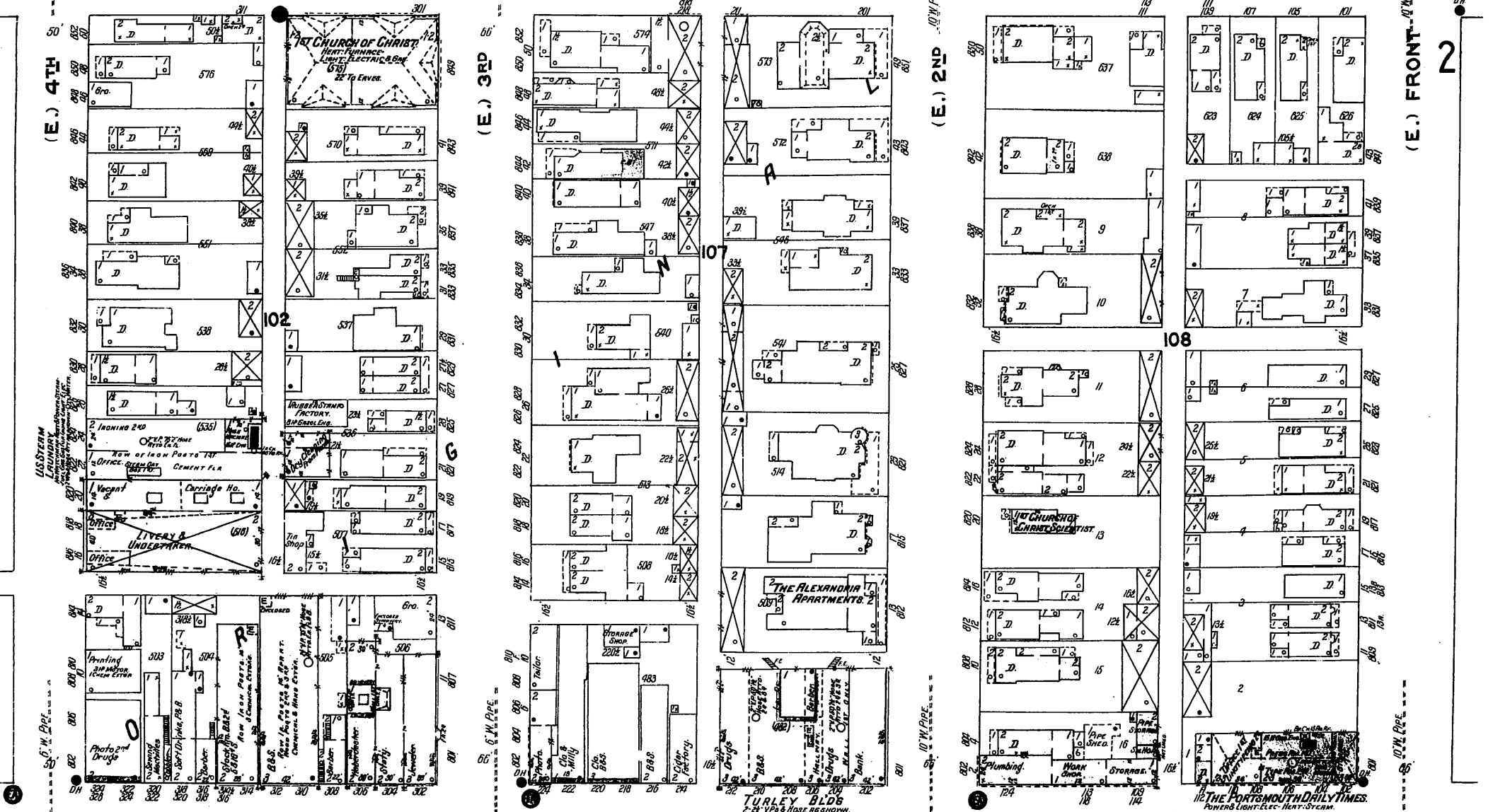


12 ST.

ST. 50

ST. 12

GAY



(E.) 4TH

(E.) 3RD

(E.) 2ND

(E.) FRONT

CHILLICOTHE

Scale of Feet.
0 10 20 30 40 50 100 150

THE PORTSMOUTH DAILY TIMES
POWER LIGHT-ELEC. HEAT-STEAM.