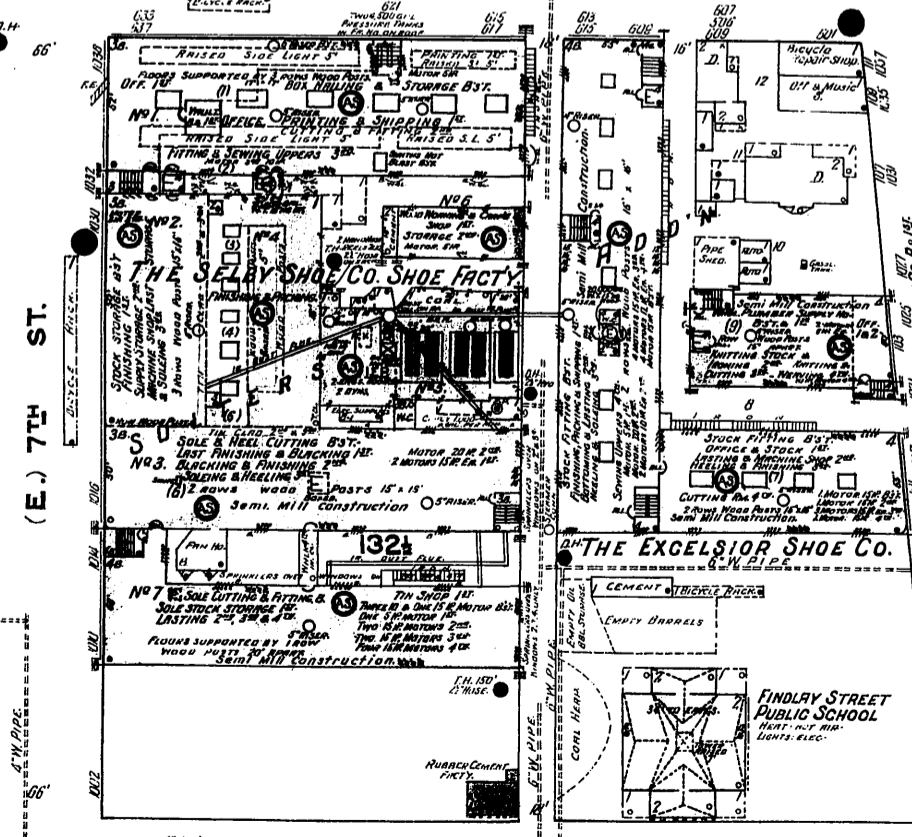
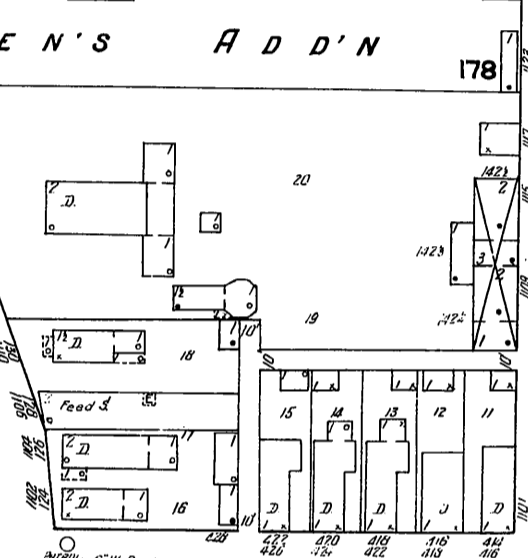
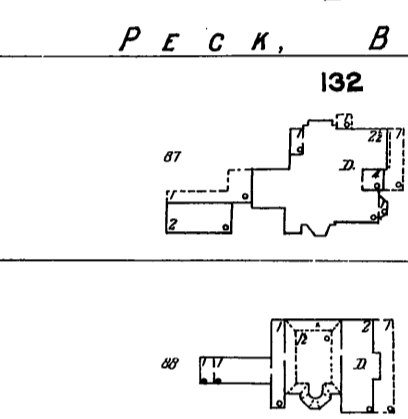
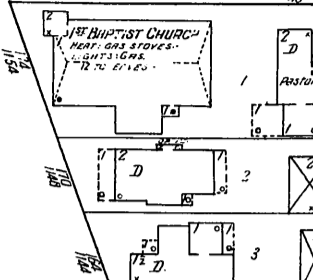
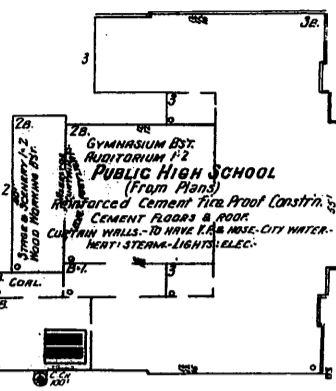
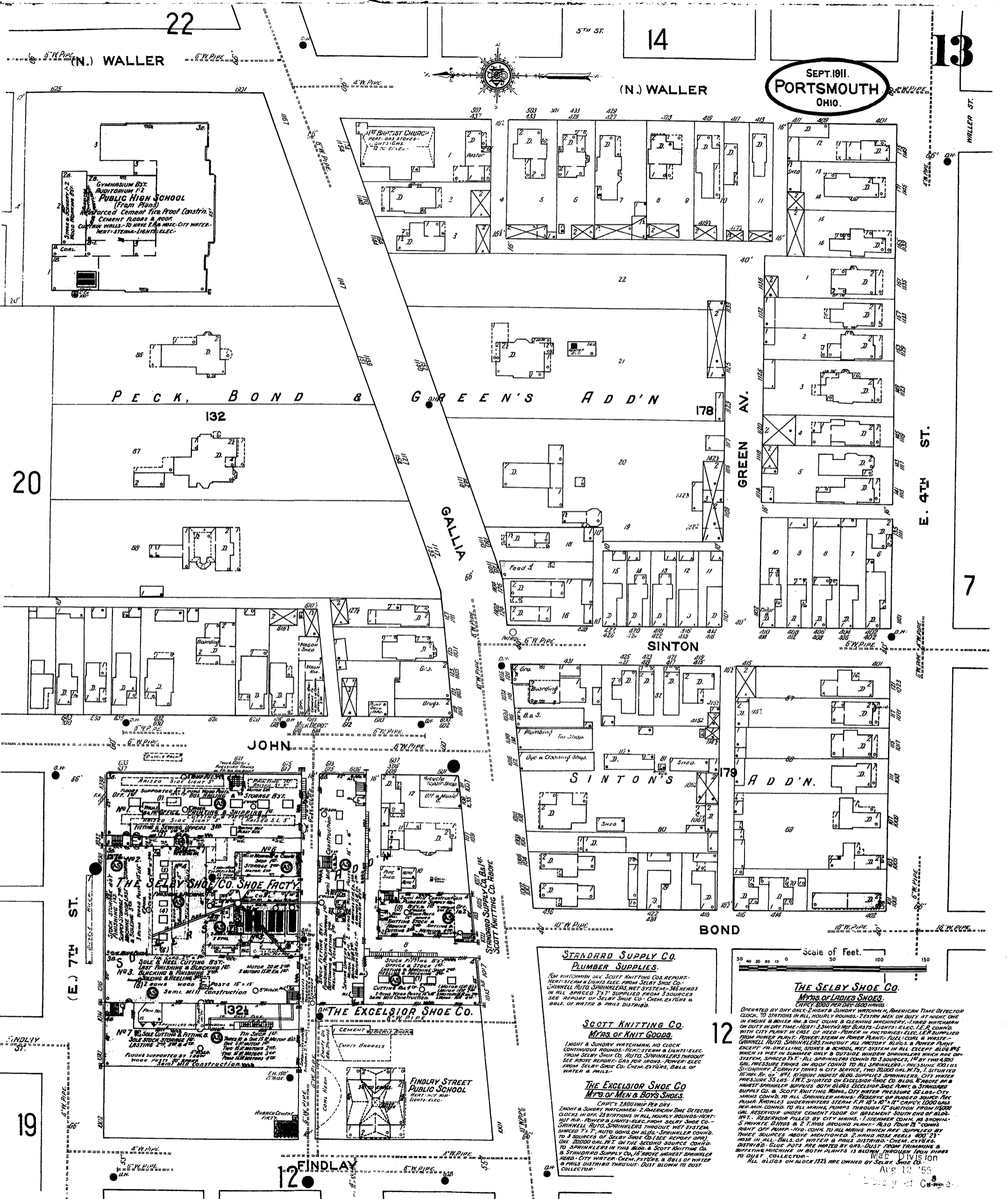


22

14

13

SEPT. 1911.  
PORTSMOUTH  
OHIO.



**STANDARD SUPPLY CO.**  
PLUMBER SUPPLIES.

FOR WATCHMAN SEE SCOTT KNITTING CO'S REPORT.  
HEAT - STEAM & LIGHTS ELEC. FROM SELBY SHOE CO.  
CHIMNEY FLOO. SPRINKLER WET SYSTEM - 346 HEADS  
IN ALL SPACED 7' X 7' SUPPLIED FROM 3 SOURCES  
SEE REPORT OF SELBY SHOE CO. - CHEM. EXT'ORS &  
BLLS. OF WATER & PAILS DISTRIB.

**SCOTT KNITTING CO.**  
MFRS. OF LADIES SHOES.

1 NIGHT & SUNDAY WATCHMAN, NO CLOCK  
CONTINUOUS ROUNDS - HEAT - STEAM & LIGHTS ELEC.  
FROM SELBY SHOE CO. AUTO. SPRINKLER THROUGHOUT  
SEE ABOVE REPORT - GAS FOR IRONS. POWER: ELEC.  
FROM SELBY SHOE CO. - CHEM. EXT'ORS, BLLS. OF  
WATER & PAILS.

**THE EXCELSIOR SHOE CO.**  
MFRS. OF MEN & BOYS SHOES.

CAP'Y 280,000 PER DAY  
EIGHT & SUNDAY WATCHMAN - 2 AMERICAN TIME DETECTOR  
CLOCKS IN OFF. 23 STATIONS IN ALL HOURLY ROUNDS - HEAT  
HOT AIR - POWER & LIGHTS ELEC. FROM SELBY SHOE CO.  
CHIMNEY FLOO. SPRINKLER THROUGHOUT WET SYSTEM  
SPACED 7' X 7' AUTO. GONGS ON ALGID. - SPRINKLER CONND.  
TO 3 SOURCES OF SELBY SHOE CO. (SEE REPORT OPP)  
ONE 20000 GAL. W.T. ON THE SECOND SOURCE CONND.  
TO SPRINKLERS IN THIS BLDG. & SCOTT KNITTING CO.  
& STANDARD SUPPLY CO. IS ABOVE HIGHEST SPRINKLER  
HEAD - CITY WATER - CHEM. EXT'ORS & BLLS. OF WATER  
& PAILS DISTRIB THROUGHOUT - JUST BELOW TO DUST  
COLLECTOR.

Scale of Feet.  
50 40 30 20 10 0 50 100 150

**THE SELBY SHOE CO.**  
MFRS. OF LADIES SHOES.

CAP'Y 8000 PER DAY - 1600 HOURS  
OPERATED BY DAY ONLY - EIGHT & SUNDAY WATCHMAN - AMERICAN TIME DETECTOR  
CLOCK - 20 STATIONS IN ALL HOURLY ROUNDS. 2 EXTRA MEN ON DUTY AT NIGHT ONE  
IN ENGINE & BOILER RM. & ONE QUINN & CLEANING MACHINERY. - LIVED WATCHMAN  
ON DUTY IN DAY TIME - HEAT - STEAM & LIGHTS ELEC. FROM SELBY SHOE CO.  
WITH CITY PLANT IN CASE OF NEED - POWER IN FACTORY ELEC. SUPPLIED  
FROM POWER PLANT - POWER - STEAM IN POWER PLANT - FUEL - COAL & WASTE -  
CHIMNEY FLOO. SPRINKLER THROUGHOUT ALL FACTORY BLDGS. & POWER PLANT  
EXCEPT ON OPENING STOVES & SCHOOLS. WET SYSTEM IN ALL EXCEPT BLDGS  
WHICH IS WET IN SUMMER ONLY & OUTSIDE WINDOW SPRINKLERS WHICH ARE DRY  
SYSTEM. SPACED 7' X 7' - ALL SPRINKLERS CONND. TO 3 SOURCES, 140 BY TWO 4500  
GAL. PRESSURE TANKS ON ROOF CONND. TO ALL SPRINKLERS - PRESSURE 120 LBS  
SECONDARY GRAVITY TANKS & CITY SERVICE, TWO 2000 GAL. W.T. 1. STURDIED  
10" DIA. 40' HGT. 10 HOURS HIGHEST BLDG. SUPPLIES SPRINKLERS. CITY WATER  
PRESSURE 55 LBS. 1. W.T. SITUATED ON EXCELSIOR SHOE CO. BLDG. ABOVE W.T.  
HIGHEST SPRINKLER SUPPLIES BOTH BLDGS. EXCELSIOR SHOE PLANT & STANDARD  
SUPPLY CO. & SCOTT KNITTING WORKS. CITY WATER PRESSURE 55 LBS. CITY  
WATER CONND. TO ALL SPRINKLER HEADS - RESERVE OR SUGGESTED SOURCE - FIRE  
PUMP. KNOWLES UNDER CONND. TO ALL SPRINKLERS - 1.5" DIAMETER CO. W. AS SHOWN  
PER MIN. CONND. TO ALL MAINS, PUMPS THROUGH 12" SUGGESTED FROM 15000  
GAL. RESERVOIR UNDER CEMENT FLOOR OF BASEMENT SOUTH END OF BLDG.  
NO. 1. RESERVOIR FULLED BY CITY MAINS. 1.5" DIAMETER CO. W. AS SHOWN  
5" PRIVATE D. BLDG. & 2" T. HAS AROUND PLANT - ALSO FOUR 2" CONNS  
RIGHT OFF PUMP - 1.5" CONND. TO ALL MAINS WHICH ARE SUPPLIED BY  
THREE SOURCES ABOVE MENTIONED. 2. HOURS HOSE BELLS 400' 2 1/2"  
NO. 1. RESERVOIR FULLED BY CITY MAINS. 1.5" DIAMETER CO. W. AS SHOWN  
5" PRIVATE D. BLDG. & 2" T. HAS AROUND PLANT - ALSO FOUR 2" CONNS  
RIGHT OFF PUMP - 1.5" CONND. TO ALL MAINS WHICH ARE SUPPLIED BY  
THREE SOURCES ABOVE MENTIONED. 2. HOURS HOSE BELLS 400' 2 1/2"  
NOSE IN ALL. BLLS. OF WATER & PAILS DISTRIB. - CHEM. EXT'ORS  
DISTRIB. - BLUE POTS ARE MARKED BY GAS. DUST FROM TRIMMING &  
BUSTING MACHINERY - BOTH PLANTS IS BLOWN THROUGH 1000  
TO DUST COLLECTOR. - 1.5" DIA. 100'

Aug 12 '11  
City of Portsmouth