

SEPT. 1911  
PORTSMOUTH  
OHIO.

23 (E.) 8TH ST.

(E.) 7TH ST.

(E.) 6TH ST.

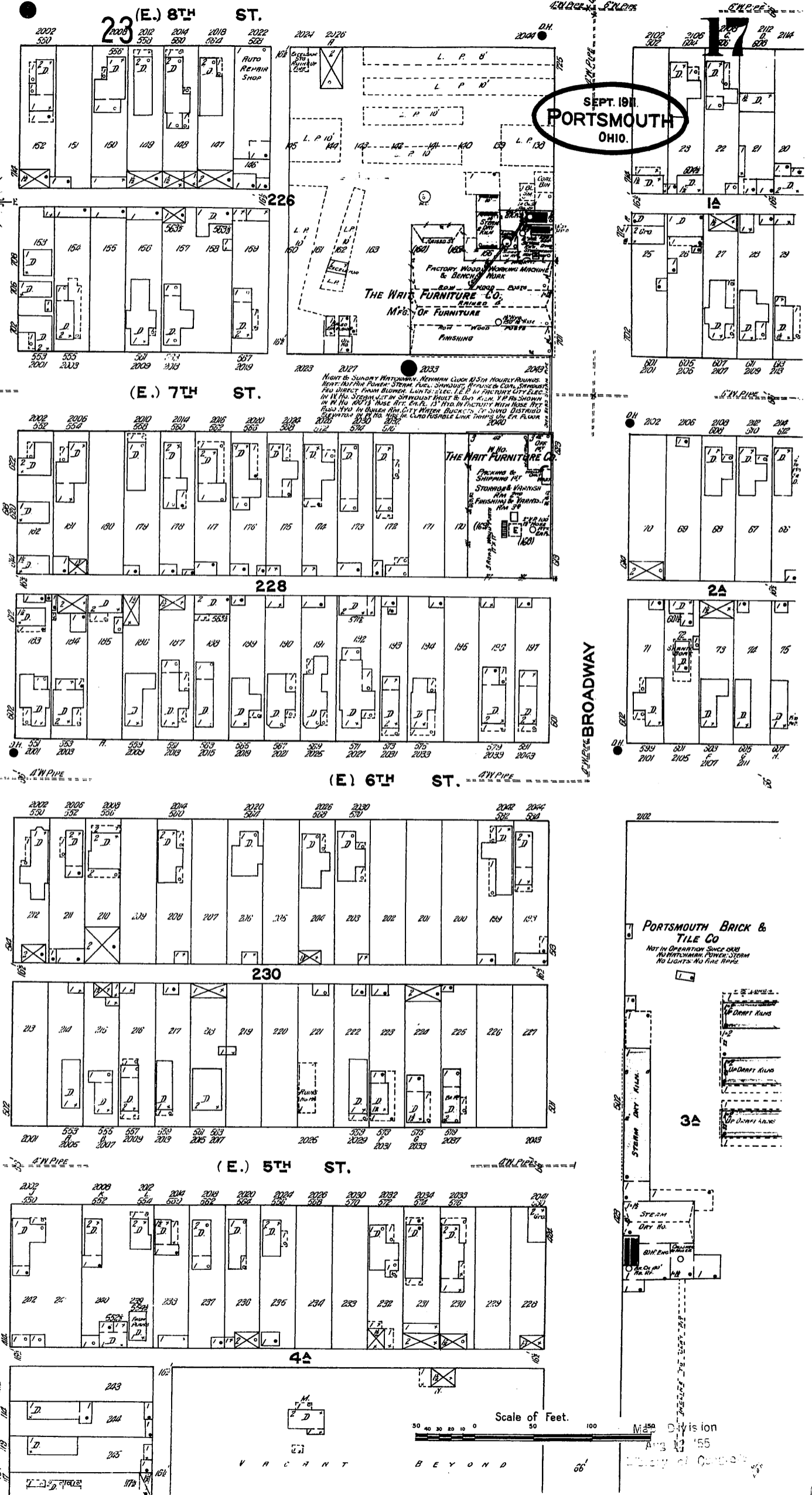
(E.) 6TH ST.

(E.) 5TH ST.

CAMPBELL AV.

BOUNDARY

BROADWAY



THE WAT FURNITURE CO.  
MFG. OF FURNITURE  
FINISHING

THE WAT FURNITURE CO.  
MFG. OF FURNITURE  
FINISHING

PORTSMOUTH BRICK & TILE CO.  
NOT IN OPERATION SINCE 1911  
NO PORTSMOUTH POWER STATION  
NO LIGHTS-NO FIRE ALARMS

Scale of Feet. 0 10 20 30 40 50 60 70 80 90 100  
Division  
Aug 13 1911

VACANT BEYOND