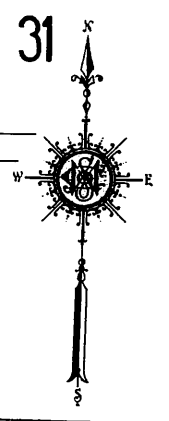


30  
36

SEPT. 1911  
PORTSMOUTH  
OHIO



24

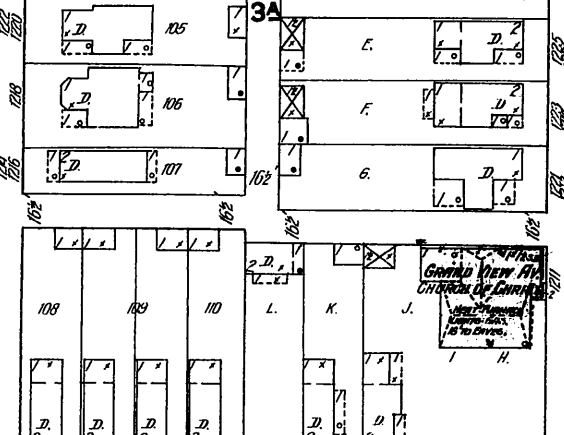
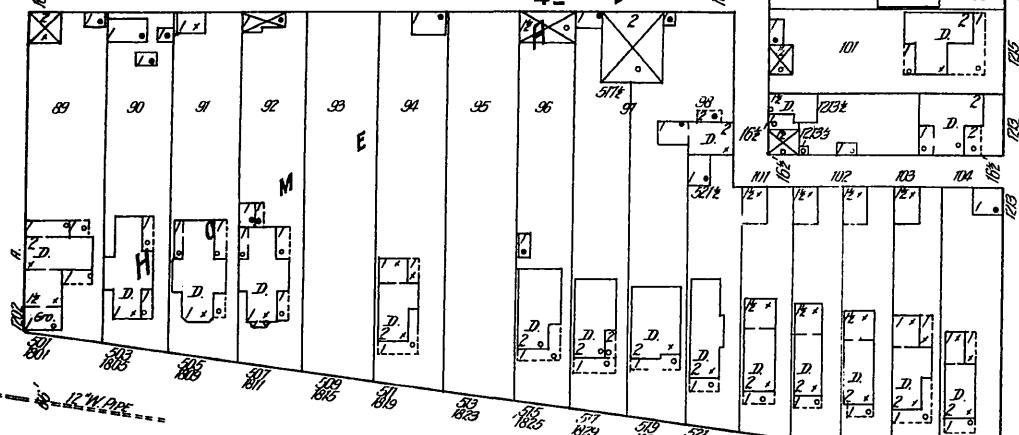
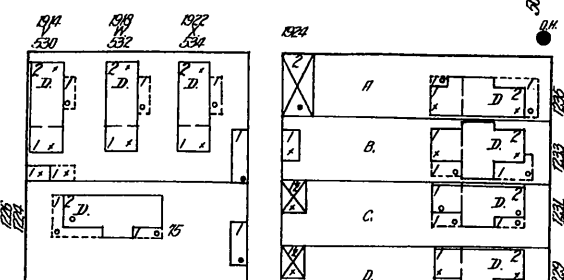
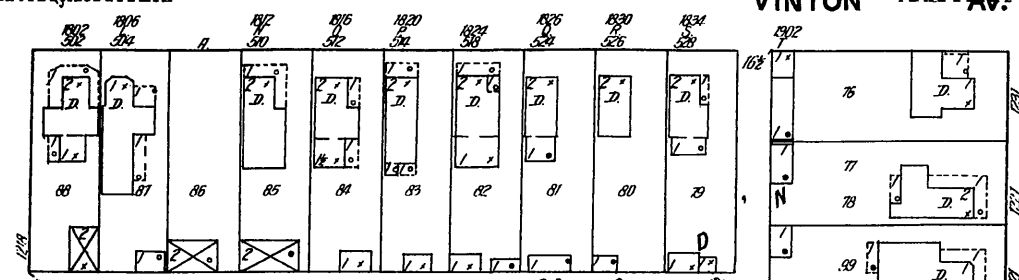
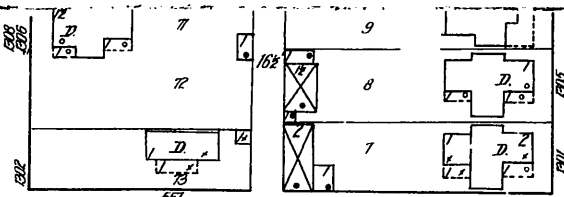
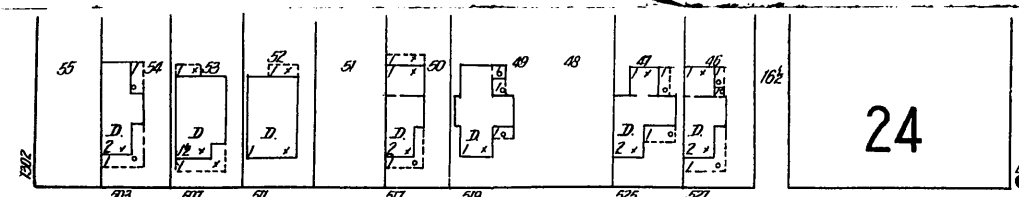
VINTON AV.

ME CONNELL AV.

GRAND VIEW AV.

31

34



ROBINSON AV.

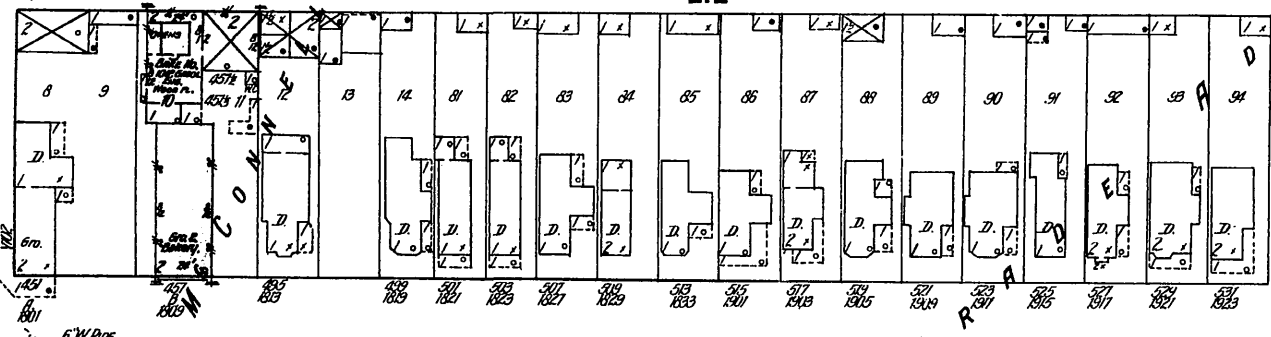
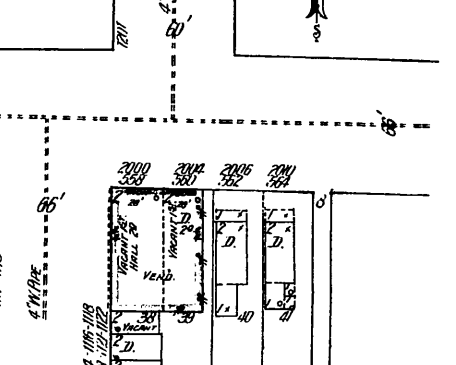
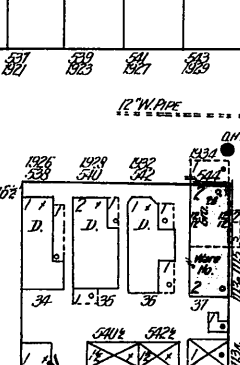
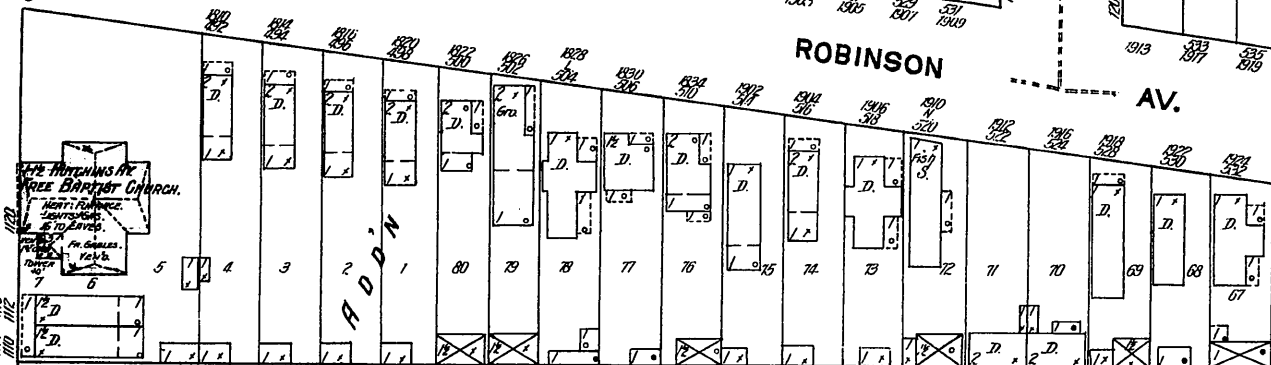
HUTCHINS AV.

212

213

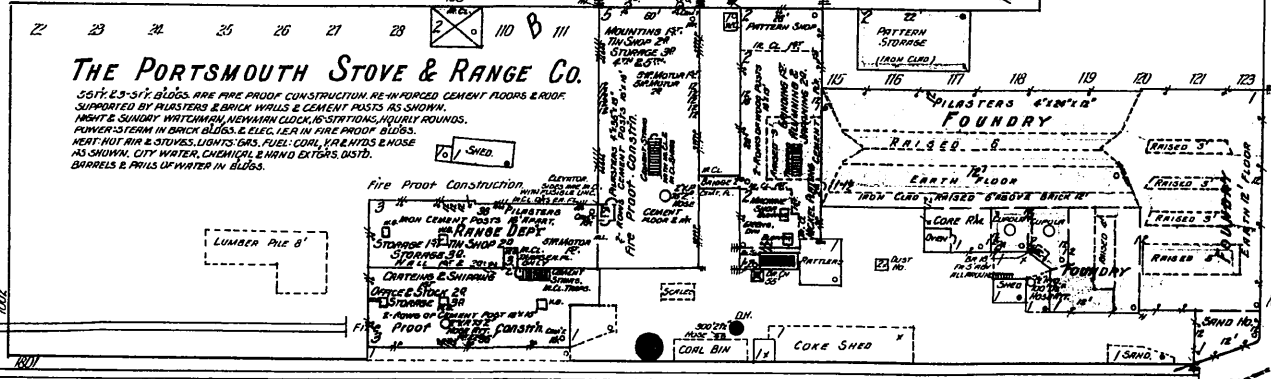
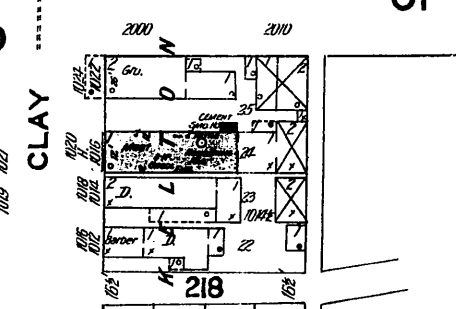
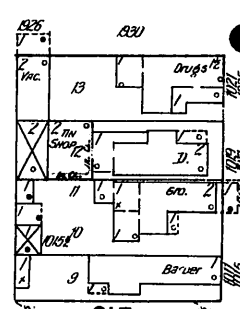
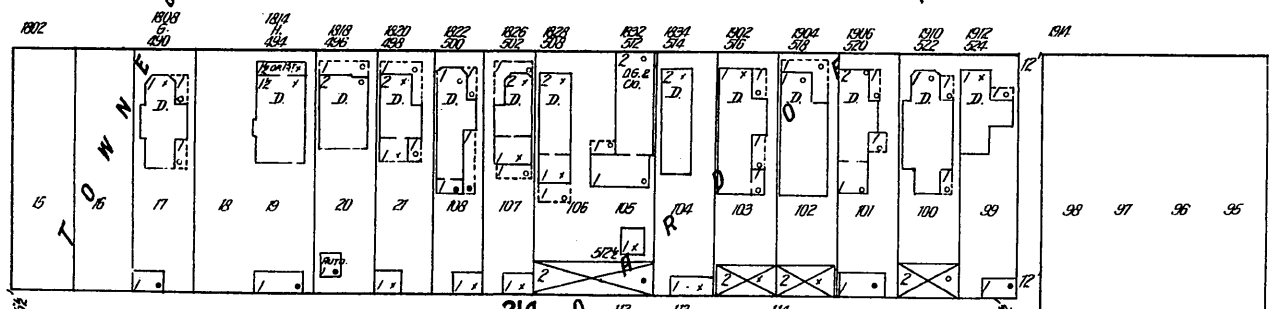
219

29



(E) 11TH ST.

31



**THE PORTSMOUTH STOVE & RANGE CO.**

55 FT. x 31 FT. BLDG. ARE FIRE PROOF CONSTRUCTION, RE-INFORCED CEMENT FLOORS & ROOF SUPPORTED BY PILLARS & BRICK WALLS & CEMENT PISTONS AS SHOWN. HEAT & SUNSHY WIND CURTAIN, MECHANICAL CLOCK, 10 SITUATIONS, HEAVY ROUNDINGS. POWERED TORN IN BRICK BLDG. & ELEC. 120 IN FIRE PROOF BLDG. HEAT, HOT AIR & STEAM, LIGHTS, GAS, FUEL, COAL, VACUUMS & HOSE AS SHOWN. CITY WATER, CHEMICAL & MINO EXTORS. DIST. CHIMNEYS & PIPES OF WATER IN BLDG.

CLAY

Scale of Feet.  
0 50 100 150

(E) 10TH ST.

23

GALLIA