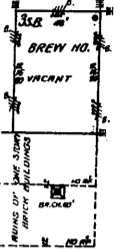


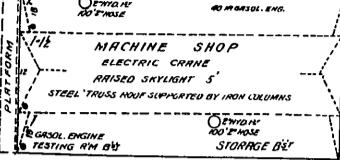


**SPRING LANE DISTILLING Co.**  
NOT IN OPERATION SINCE 1904.



**HEER ENGINE COMPANY**  
MFG OF GAS ENGINES.

ONE NIGHT WATCHMAN-NO CLOCK-POWER:  
GASOLINE-HEATING-OILS-ELECTRIC-  
TWO 2" HOSES & HOSE AS SHOWN-CITY WATER-  
12 CHEMICAL & 6 DRY EXTINGUISHERS DISTRIBUTED



8TH (E. 7TH) ST.

SEPT. 1911.  
**PORTSMOUTH**  
OHIO.

60' KENDALL AV.

Located 3 1/2 Miles E. of Portsmouth.

**BREECE VENEER**

**BREECE MFG Co.**  
WOOD RIMS & BENDING WKS.

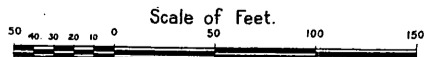
**PHIL THOMPSON ABATTOIR & PACKING Co.**

**PORTSMOUTH CHEMICAL Co.**

Located 3 Miles E. of Portsmouth

**THE PEBBLES PAVING BRICK COMPANY**

CAPACITY: 10,000 PER DAY.  
NIGHT & SUNDAY WATCHMAN-NO CLOCK-MEN  
ON DUTY NIGHTS-POWER-STEAM-LIGHTS-ELEC.  
I.E.P. S. HOSES-FUEL-COAL-12" HYDRANTS & HOSE  
AS SHOWN-CONND TO 15,000 GAL. WATER TANK,  
60' ABOVE GROUND, FILLED BY COND. D.W.P. PUMP  
AND BY S.P. PUMP AT RIVER-CHEMICAL EXTING.  
WATER BBL'S AND PAILS.



Map Division  
Aug. 12 '15

OHIO RIVER BEYOND