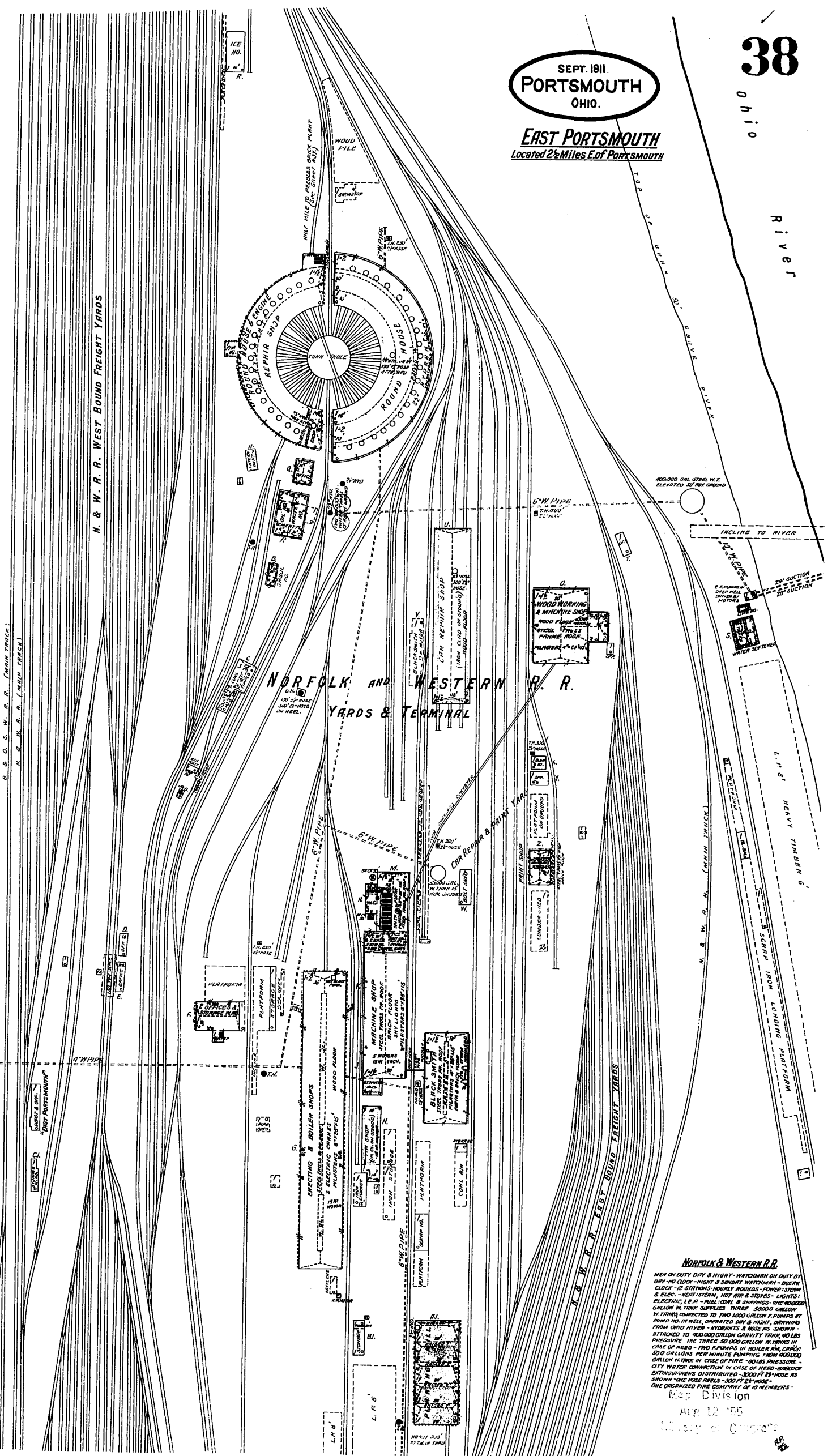
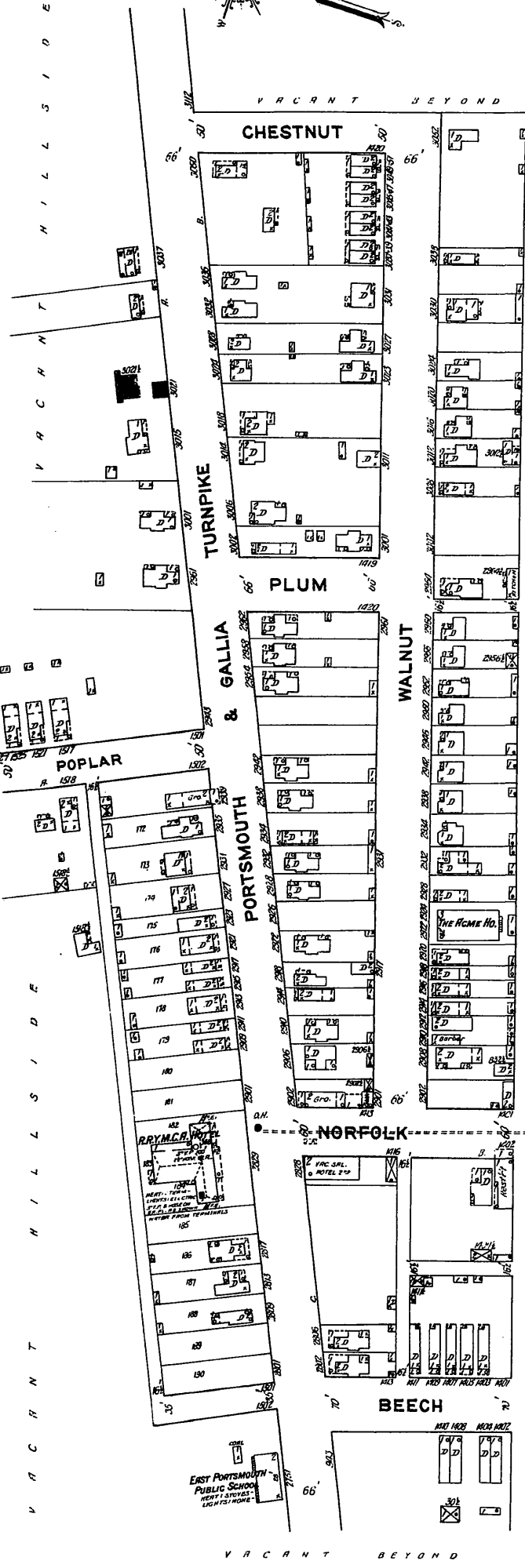


**EAST PORTSMOUTH**  
 Located 2 1/2 Miles E. of Portsmouth

River



Scale 100 Ft. to One Inch.

**Norfolk & Western R.R.**  
 MEN ON DUTY DAY & NIGHT - WATCHMAN ON DUTY BY  
 DAY - NO CLOCK - NIGHT & SUNDAY WATCHMAN - BUZZER  
 CLOCK - 12 STRINGS - HEAVY HOODLUMS - POWER SYSTEM  
 & ELEC. - HEAT SYSTEM - HOT AIR & STEAM - LIGHTS  
 ELECTRIC, I.E.R. - FUEL OIL & SAWINGS - ONE WOOD  
 GILSON IN TANK SUPPLIES THREE 5000 GILSON  
 IN TANKS CONNECTED TO TWO 1000 GILSON PUMPS AT  
 PUMP NO. IN WELL, OPERATED DAY & NIGHT, DRAWING  
 FROM OHIO RIVER - WATERWORKS & HOSES AS SHOWN  
 ATTACHED TO 4000 GILSON GRABBY TRINK, 40 LBS  
 CASE OF NEED - TWO PUMPS IN BOILER RM, CAPAC  
 500 GALLONS PER MINUTE PUMPING FROM 40000  
 GILSON IN TANK IN CASE OF FIRE - HOLES PRESSURE  
 CITY WATER CONNECTION IN CASE OF NEED - BARBER  
 EXTRUUSIONS DISTRIBUTED - 300 FT 2 1/2 HOSE AS  
 SHOWN - ONE HOSE REEL - 500 FT 2 1/2 HOSE -  
 ONE ORGANIZED FIRE COMPANY OF 10 MEMBERS -  
 Map Division  
 Aug 12 '11  
 City of Portsmouth