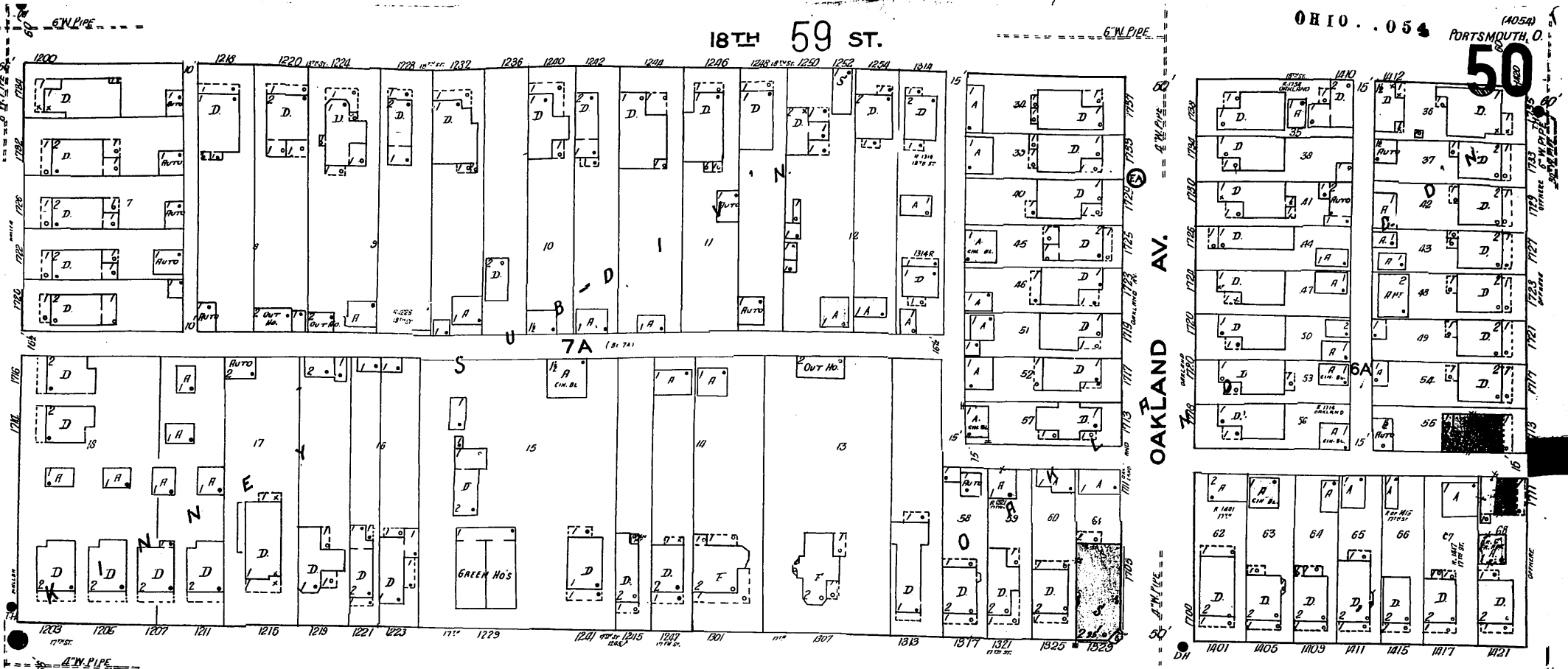
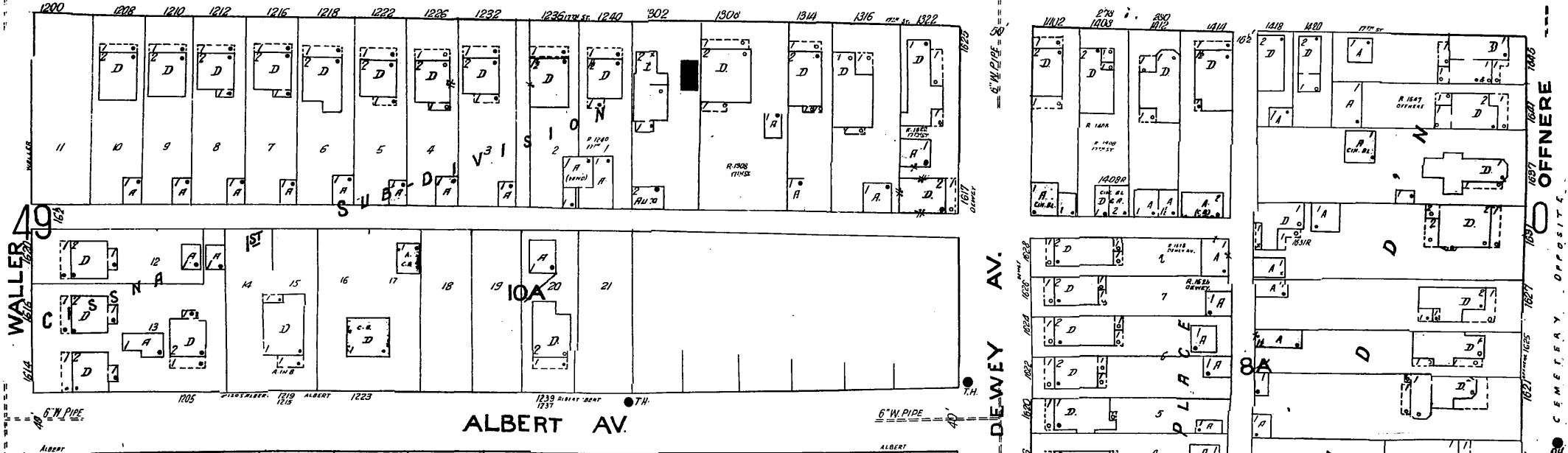


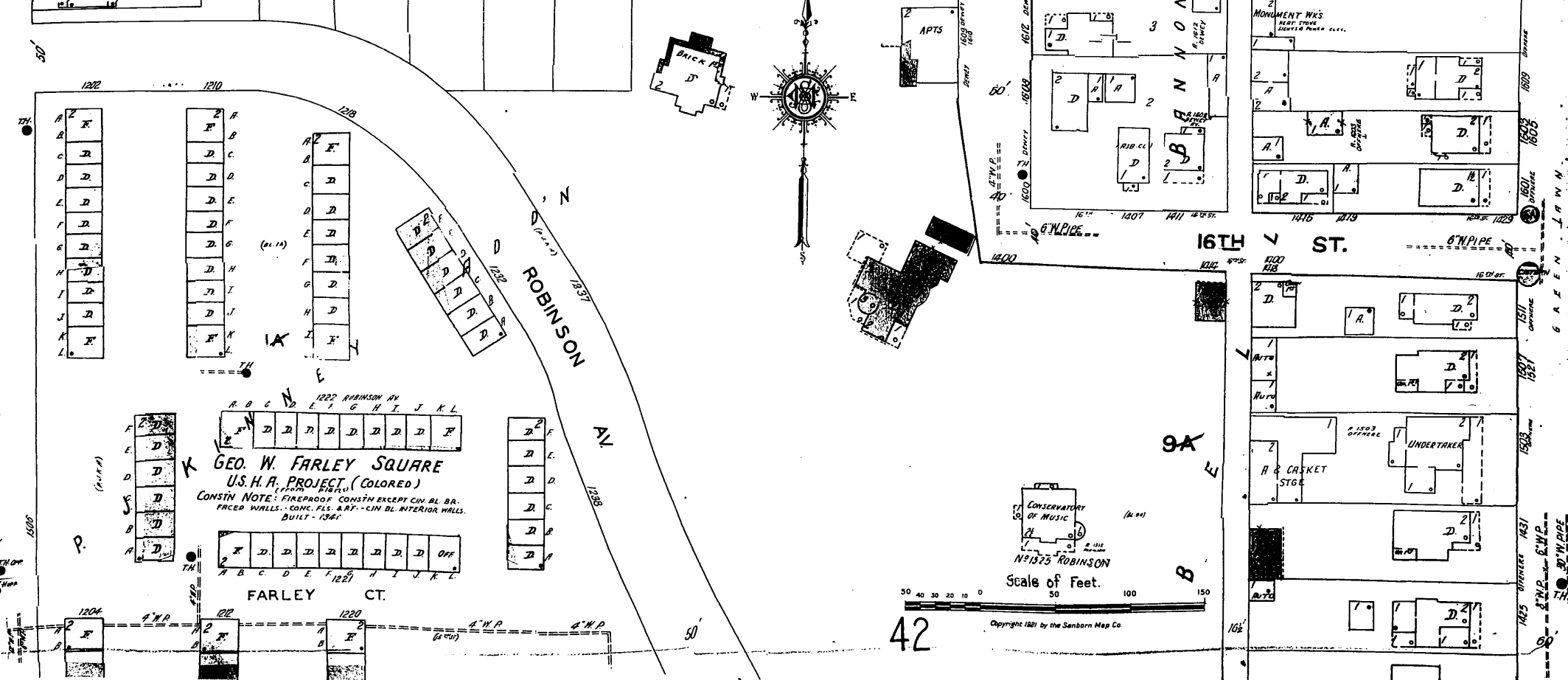
18TH 59 ST.



17TH ST.



16TH ST.



GEO. W. FARLEY SQUARE
 U.S. H. A. PROJECT (COLORED)
 CONSTR. NOTE: FIREPROOF CONSTR EXCEPT CIN BL BR-
 FACED WALLS. CONC. FLS. ART. - CIN BL INTERIOR WALLS.
 BUILT - 1927.

CONSERVATORY OF MUSIC
 N 1375 ROBINSON

