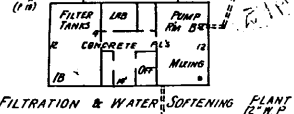


76
10



FILTRATION & WATER SOFTENING PLANT

OHIO

JUNE 1930
SHELBY
OHIO

10

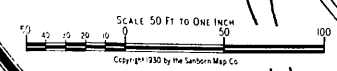
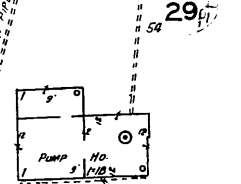


Black Fork Creek

THE OHIO SEAMLESS TUBE CO.

WATCHMAN WITH CLOCK - POWER: STEAM & ELEC.
HEAT: STEAM & STOVES, FUEL: COAL & GAS - CITY
& CREEK WATER, 75,000 GAL. STEEL W. T. BRASS
ELEV'D. 80' ON STEEL FR. TRNK. FILLED BY 2 COULD
ELEC. PUMPS - CAPY. 500 G.P.M. EA. 1 DAYTON - DOWD
CENTRI. GAS ENG. PUMPS CAPY. 1,500 G.P.M. WATER
FROM 2 POUNDS (SHEET 1) FILLED BY CREEK. 15 D.H.S.
& 2000' 2 1/2" HOSE. CHEM. EXT'RS. AUTOMATIC FIRE
ALARM 12 BOWES
EMPLOYEES FIRE BRIGADE
ENCLOSED WITH WIRE FENCE 8' HIGH

SHELBY WATER CO.
NO EXPOSURE ANY SIDE



N. GAMBLE

7

SUMMIT AV.

