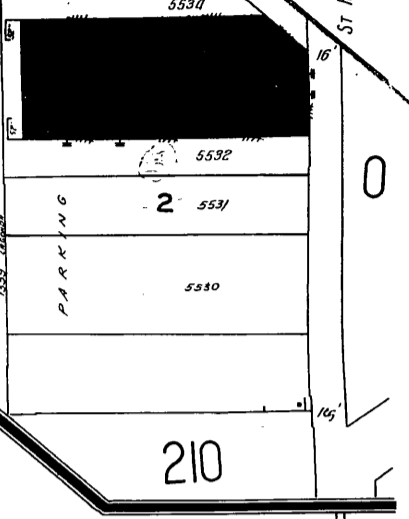


210
(91-92)
209

ROBBINS & MYERS INC.
MFG ELECTRIC MOTORS,
GENERATORS, FANS, ETC.
NIGHT WATCHMAN, A D T
SERVICE - FIRE ALARMS
BOXES ON GROUNDS WITH
MISCELLANEOUS HEAVY
STEAM IN PLANTS 1 & 2
IN UPPER PLANT LIGHT &
FOUNDRY - ELEC. FUEL, COAL
CHIMNEY EXHAUSTS AUTOMATIC
CHAINS FOR ENAMEL DIPS
IN PLANT NO. 2 - 100 GAL
& 70 GAL CHEMICALS,
WATER PIPES ON FOUNDRY

ST. RAPHAEL'S CEMETERY

206
LAGONDA



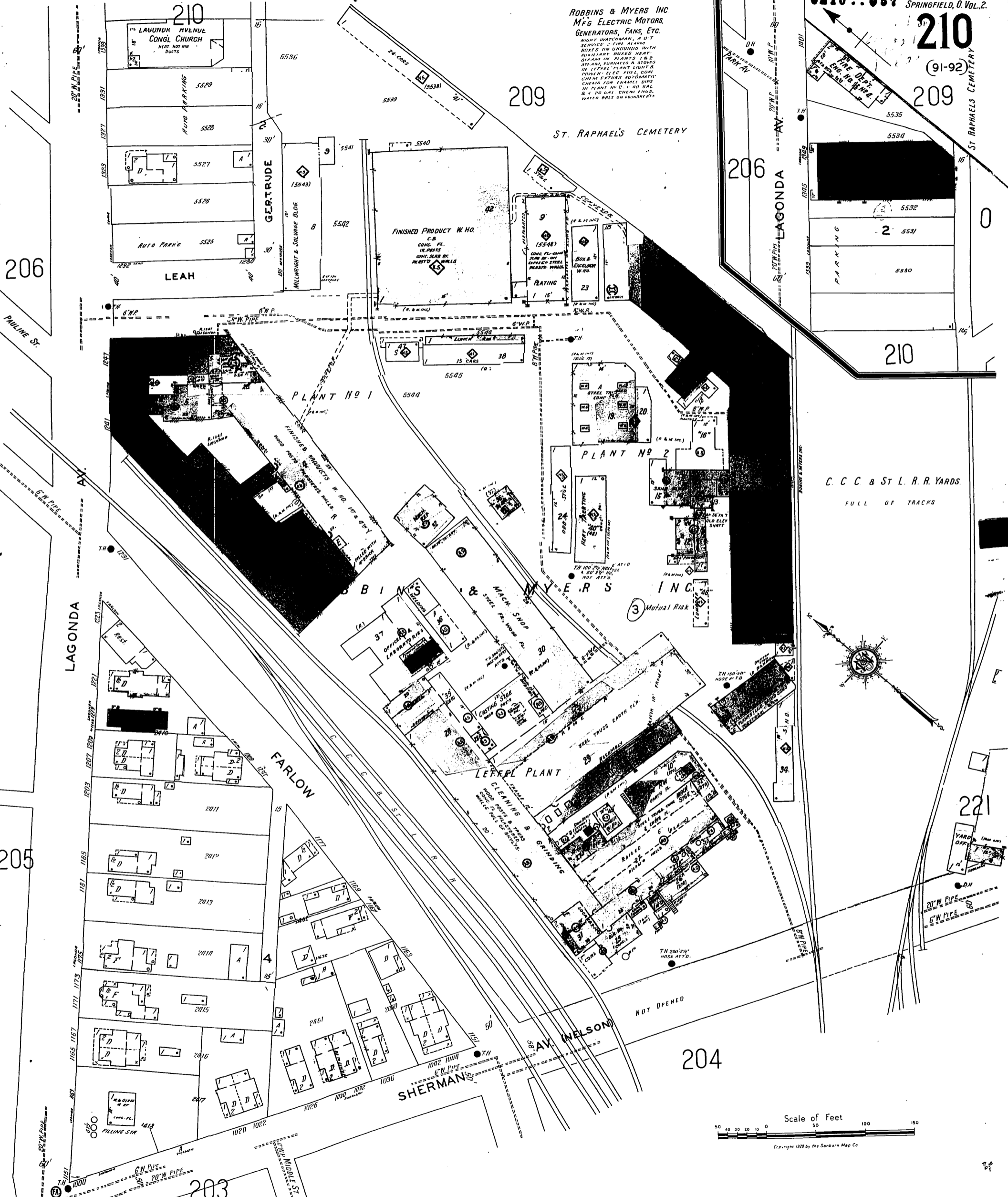
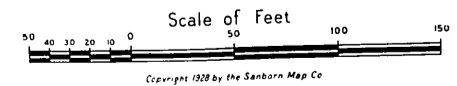
210

C. C. C. & ST. L. R. R. YARDS
FULL OF TRACKS



221

204



209

206

205

203

LAGONDA

FARLOW

SHERMAN

AV. NELSON

PLANT NO. 1

PLANT NO. 2

LEFKEL PLANT

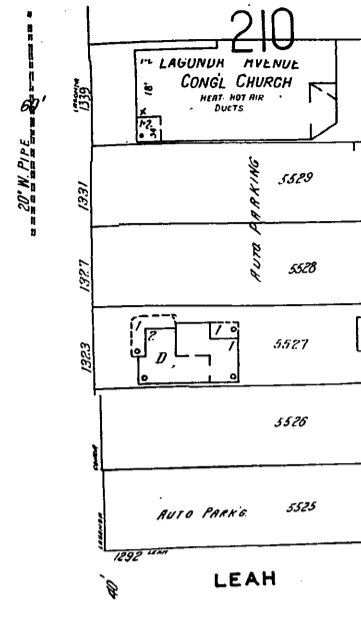
ROBBINS & MYERS INC.

LEAH

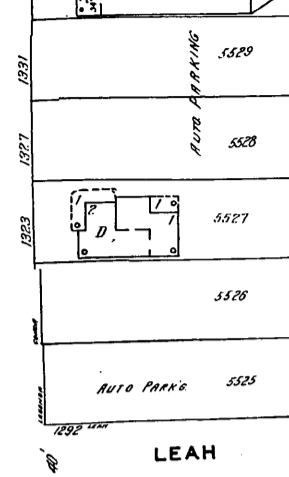
PAULINE ST.

LAGONDA

ST. RAPHAEL'S CEMETERY



210
LAGONDA AVENUE
CONGL. CHURCH
HEAT HOT AIR
DUETS



209
GERTRUDE

206

205

204

203

202

201

200

199

198

197

196

195

194

193

192

191

190

189

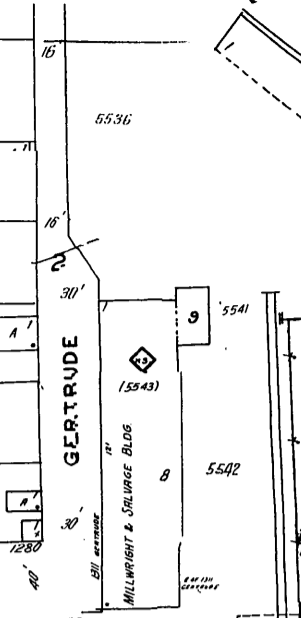
188

187

186

185

184



209

206

205

204

203

202

201

200

199

198

197

196

195

194

193

192

191

190

189

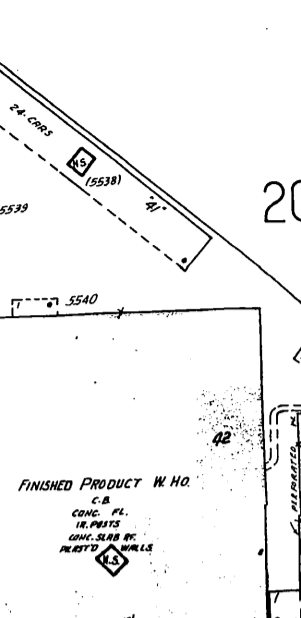
188

187

186

185

184



209

206

205

204

203

202

201

200

199

198

197

196

195

194

193

192

191

190

189

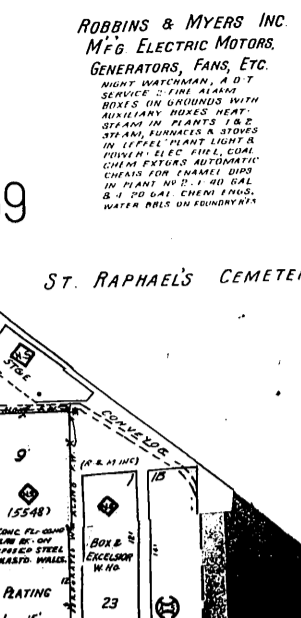
188

187

186

185

184



209

206

205

204

203

202

201

200

199

198

197

196

195

194

193

192

191

190

189

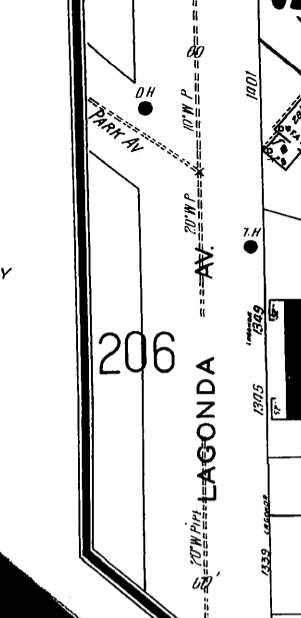
188

187

186

185

184



209

206

205

204

203

202

201

200

199

198

197

196

195

194

193

192

191

190

189

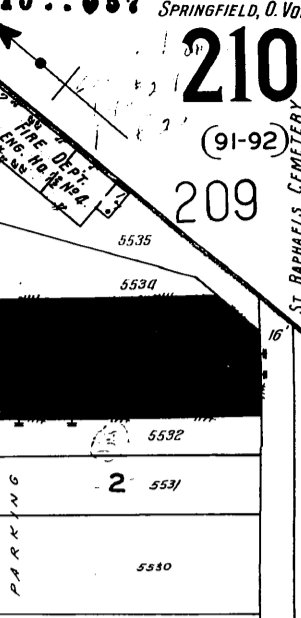
188

187

186

185

184



210

206

205

204

203

202

201

200

199

198

197

196

195

194

193

192

191

190

189

188

187

186

185

184