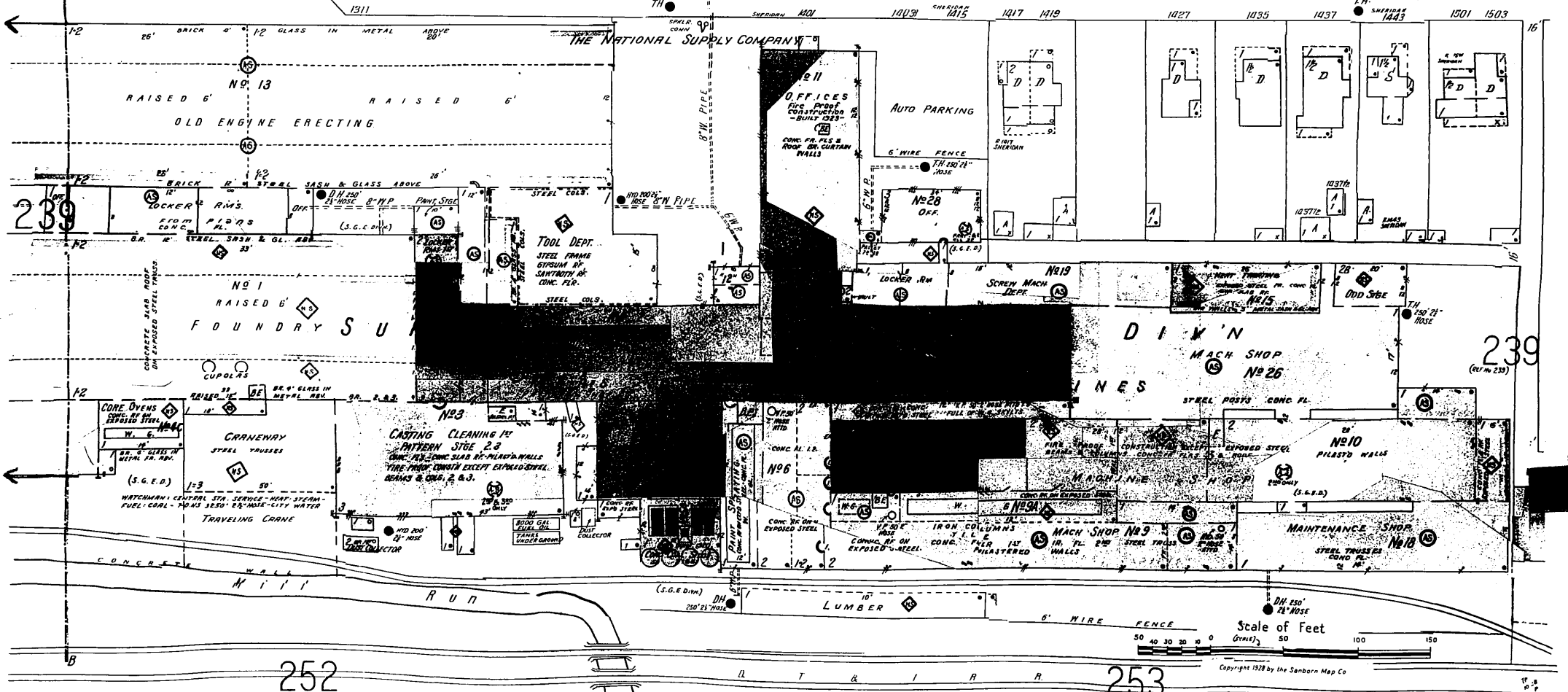


STATE HIGHWAY DEPARTMENT
GARAGE
CAPCY 20 TRUCKS
HEAT STOVES LIGHTS ELEC
EARTH FLR

THIS DETACHMENT NOT CORRECTED
SINCE NOV. 1939.
NOW SHOWN ON SHEET 263.



THE NATIONAL SUPPLY COMPANY

RAISED 6' NO. 13
OLD ENGINE ERECTING

NO. 1
RAISED 6'
FOUNDRY SU

NO. 3
CASTING CLEANING 1st
PATTERN STGE 2.3

NO. 11
OFFICES
FINE BRICK
CONSTRUCTION
BUILT 1923

AUTO PARKING

DIKIN'S
MACH SHOP
NO. 26

NO. 10
PILES TO WALLS

MAINTENANCE SHOP
NO. 18

Scale of Feet
0 50 100 150