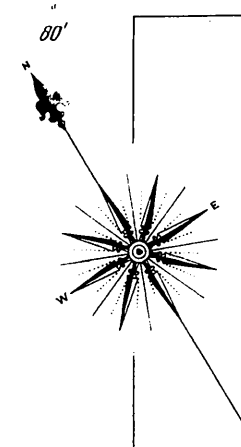
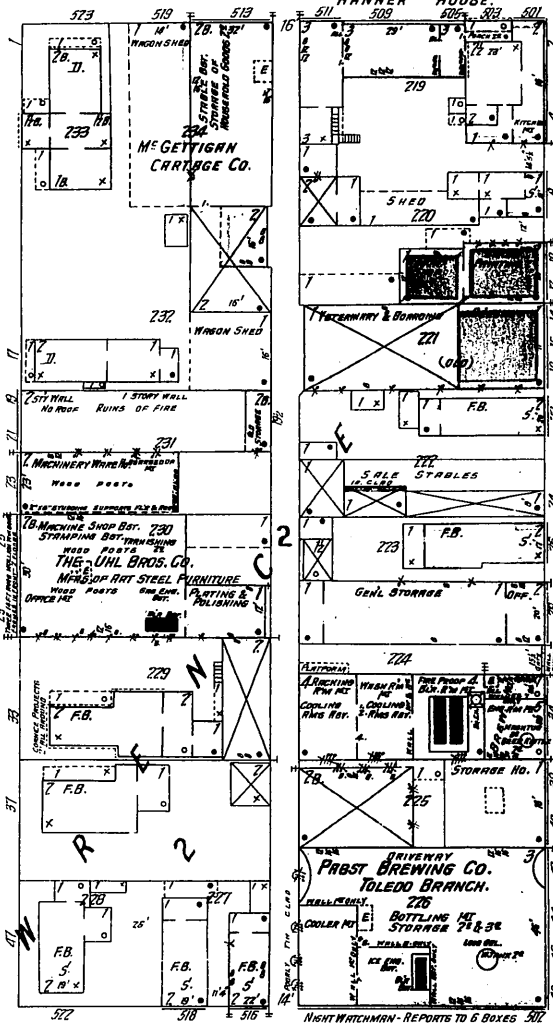
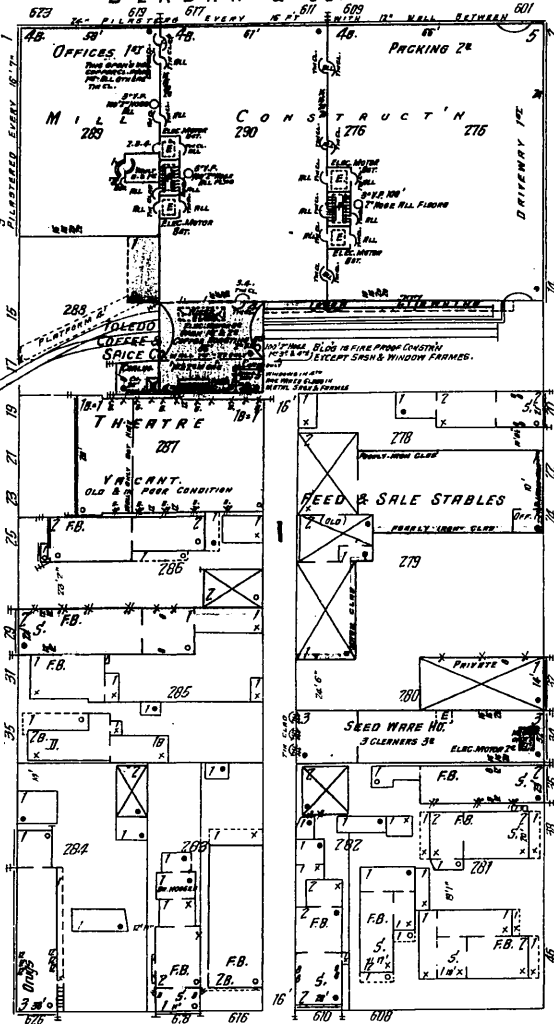


WASHINGTON

EMPIRE BUILD'G
BERDAN & Co. - Whol. Gro.

BERDAN & Co.
NIGHT WATCHMAN - HOURLY REPORTS TO 14 STATIONS, M'NARMAN SYSTEM - REAR STEAM - FUEL COAL - LIGHTS ELECTRIC - THE STAMP PIPES ARE CONNECTED TO CITY WATER MAIN - CHEMICAL EXTRACTS DISTRIBUTED - SKYLIGHTS OVER ELEVATOR SHAFTS ARE WIRED GLASS SET IN METAL FRAMES - STAIRWAYS & ELEVATOR SHAFTS THROUGHOUT ARE FIRE PROOF, EXCEPTING SMALL AMOUNT OF WOOD BETWEEN SKYLIGHT FRAMES AND BRICK WALLS -



6

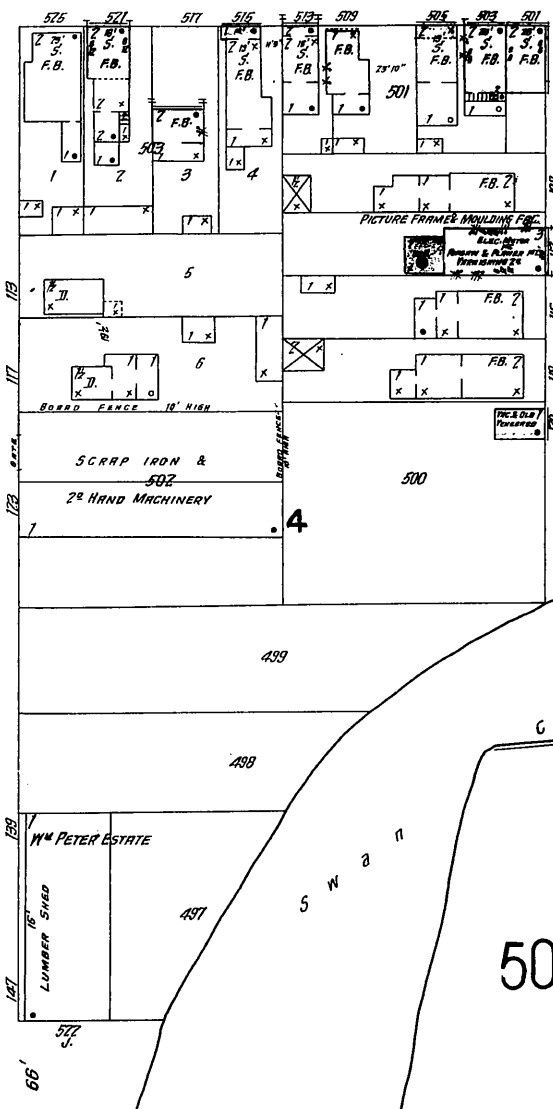
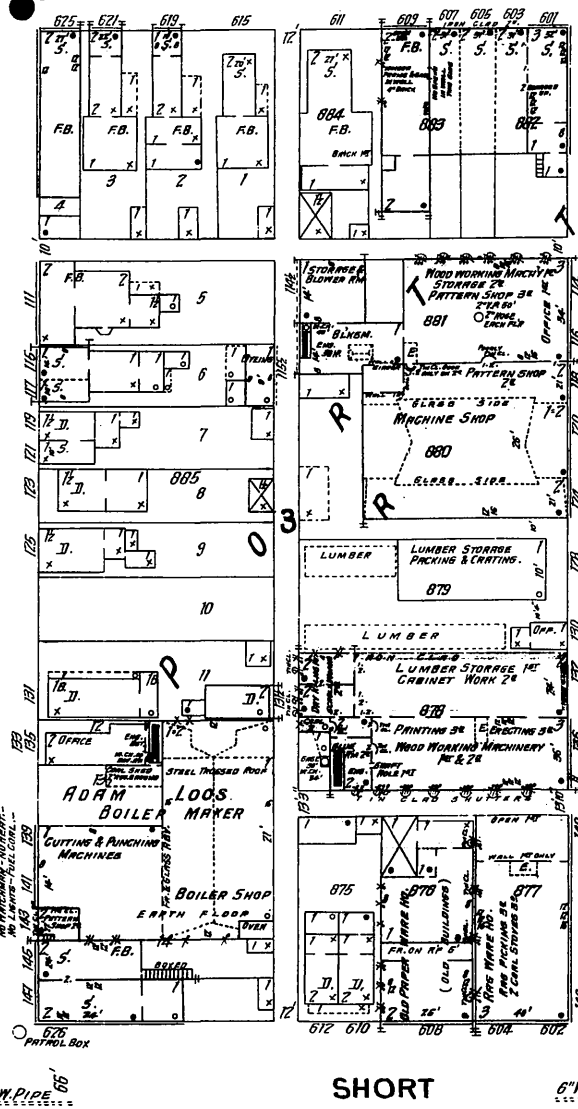
10

LAFAYETTE

S. ERIE

S. HURON

THEO. HEIN FURNITURE CO.
CARRY 35,000 FT. OF LUMBER - 45 EMPLOYEES - NIGHT & SUNDAY WATCHMAN - REPORTING TO 5 BOXES OF T. T. & M. CO. - HEAT STEAM - LIGHTS ELECTRIC - FUEL COAL & WASTE - DUST & SHAVINGS CONVEYED FROM TWO THIRDS OF MACHINES, BY BLOWER THROUGH METAL TUBES, TO BRICKER FURNACE CITY WATER - 50" RUBBER HOSE - 5 EX. EXTINGUISHERS DISTRIBUTED -



LUCAS ST.

VANCE ST.

8

50

SHORT

8

Scale of Feet.

