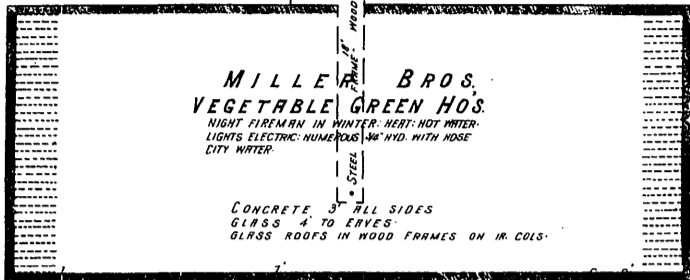


623

N. Y. C. Lines P.R.

J. TYRRELL, VEGETABLE GREEN HO'S
HEAT: HOT WATER
LIGHTS: ELECTRIC-CITY WATER



MILLER BROS.
VEGETABLE GREEN HO'S
NIGHT FIREMAN IN WINTER-HEAT: HOT WATER-
LIGHTS: ELECTRIC-NUMEROUS 3/4" HYD. WITH HOSE
CITY WATER

CONCRETE 3" ALL SIDES
GLASS 4" TO EAVES
GLASS ROOFS IN WOOD FRAMES ON IR. COLS.

Located 5 Miles W. of Court House

636
(18)

SCALE 100 FT. TO AN INCH
-Entire Sheet-

SEARLES BROS.
VEGETABLE GREEN HOUSES

2 MEN ON DUTY NIGHTS IN WINTER: HEAT:
HOT WATER-LIGHTS & POWER ELECTRIC-FUEL:
COAL: NUMEROUS 3/4" HYD. WITH HOSE BTTO-20,000
GAL. H.T. ELEV'D 60' FILLED FROM DEEP WELL BY
KEYSTONE P.P. (CAP'CY 200 GAL. PER. MIN.)

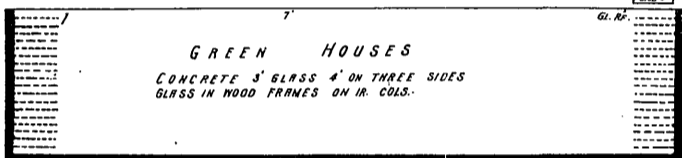
CONCRETE ALL SIDES 3" BR. GROUND
GLASS ABOVE 4"
GLASS ROOFS IN WOOD FRAMES-SUPPORTED
BY IRON COLUMNS

Located 6 Miles W. of Court Ho.

THE WRIGHT BROS. GREEN HOUSE CO.
-VEGETABLE GREEN HOUSES-

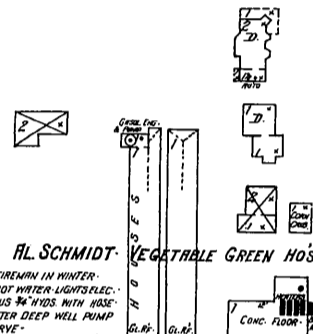
NIGHT FIREMAN IN WINTER-HEAT: HOT WATER-LIGHTS: ELECTRIC,
NUMEROUS 3/4" HYD. WITH HOSE SUPPLIED BY 36,000 GAL. H.T. ELEV'D
75' BR. GROUND AND FILLED BY LINDLAW-DUNN-GORDON F.P. (SITE
12' X 10' X 18') FROM DEEP WELLS-2 1/2" HOSE CONNECTION, EXTENDS FROM
PUMP TO YARD

Located 4 1/2 Miles W. of Court Ho.



GREEN HOUSES
CONCRETE 3" GLASS 4" ON THREE SIDES
GLASS IN WOOD FRAMES ON IR. COLS.

DORR



AL SCHMIDT-VEGETABLE GREEN HO'S
NIGHT FIREMAN IN WINTER-
HEAT: HOT WATER-LIGHTS: ELEC.
NUMEROUS 3/4" HYD. WITH HOSE-
CITY WATER DEEP WELL PUMP
IN RESERVE

Located 4 3/4 Miles W. of Court Ho.

W. BANCROFT

WM CONRAD-VEGETABLE GREEN HO'S
HEAT: HOT WATER-LIGHTS: OIL
NUMEROUS 3/4" HYD. WITH HOSE, SUPPLIED
BY 6000 GAL. TANK- ELEV'D 50' FILLED BY
FLINT-WALLING F.P. FROM DEEP WELL



GREEN HO.
CONC. 3" GLASS 4" ALL SIDES
GLASS IN WOOD FRAMES ON
IRON COLUMNS

Located 5 Miles W. of Court Ho.

RICHARD RD

DORR

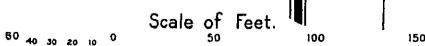
DORR

DORR

INVERNESS GOLF CLUB

MAIN CLUB HO. EXCEPT LOUNGING RM & DINING & DANCE
HALL IS FIRE-PROOF CONSTRY EXCEPT FOR WOOD JOIST
CEILING 2ND & WOOD GABLE ROOF, REINFC. CONC. FLOORS 2ND-
NEST LOCKER WING, GALL & KITCHEN & DORMITORIES & BTRC
ROBE, EQUIPPED WITH NINGARRA AUTO SPARKERS, OFFICE
WING, LOUNGING RM. & DINING & DANCE HALL SPALD ONLY IN
ATTIC- VERANDA'S NOT SPALD, CROQU HO & ITS VERANDA SPALD,
ALL VERANDAS MET & SPACING RIVETED 8" X 6" SUPPLIED BY
DIRECT CONN. TO TOLEDO CITY MAINS-PRESSURE ABOUT 25 LBS.
600' H.T. HOSE BTTO TO 3 1/2 PS: HEAT: STEAM- LIGHTS: ELECTRIC

Located 6 1/2 Miles W. of Court Ho.



Copyright 1921 by the Sanborn Map Co.

GOLF LINKS BEYOND D