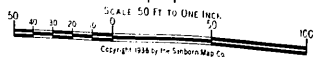
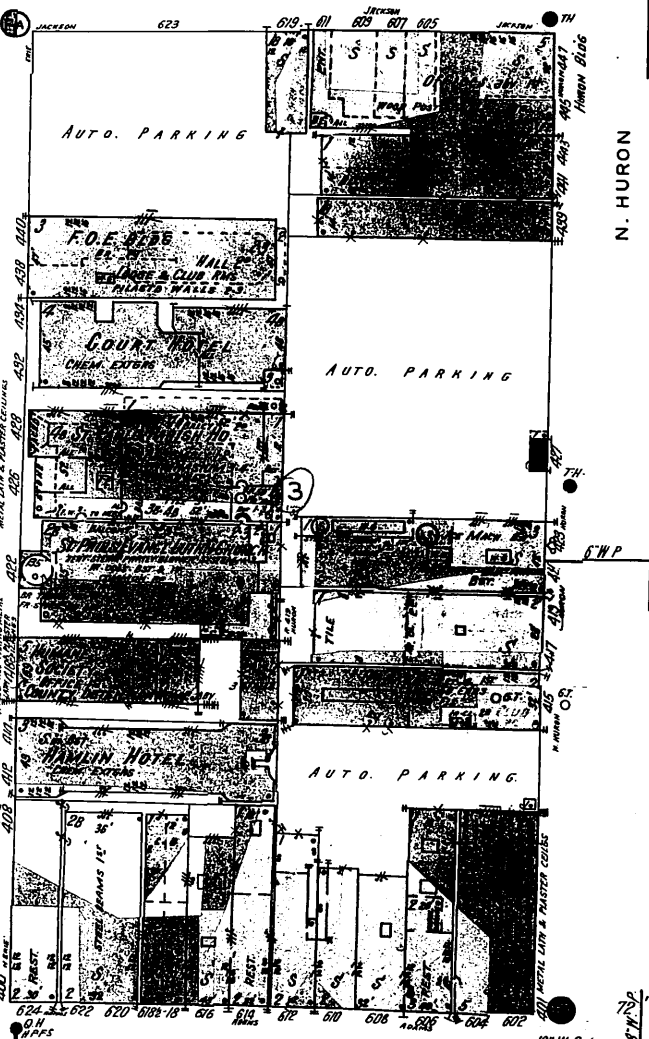


LUCAS COUNTY COURT HO.
FIRE PROOF CONSTR EXCEPT EXPOSED STEELING IN
TILE FLS. W. AF BRICK STONE FACED WALLS BUILT 1894-1897
WATCHMAN - A D.T. SERVICE - HEAT - HOT AIR BLOWER
SYSTEM CHEM. EATERS



SCALE 50 FT TO ONE INCH
Copyright 1928 by The Standard Map Co.