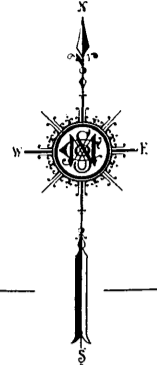


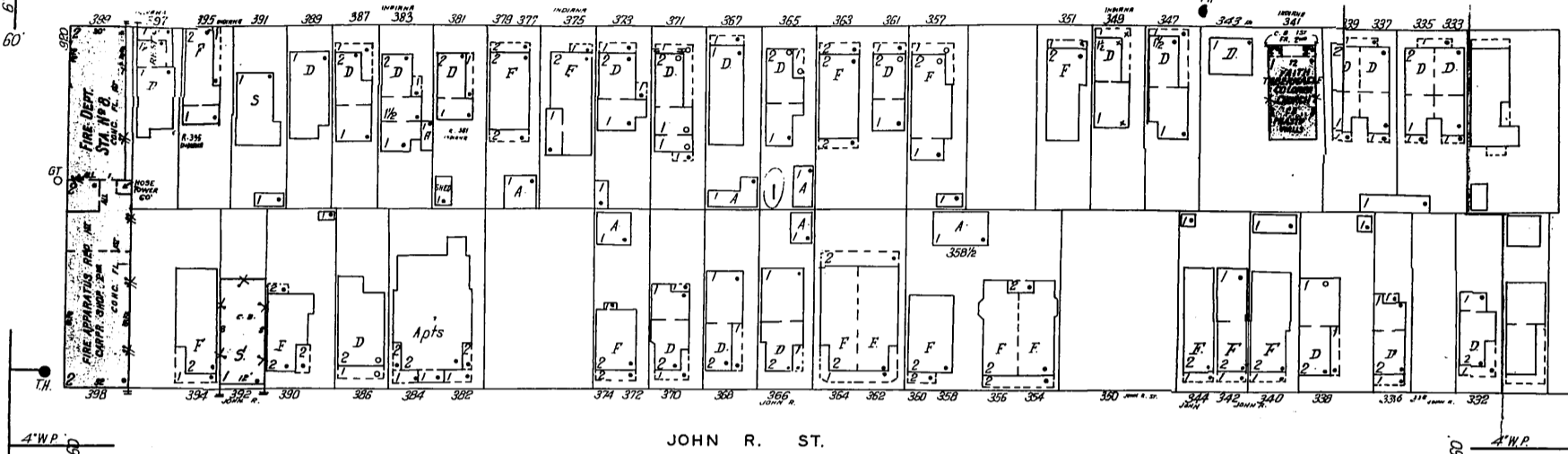
47

(1)

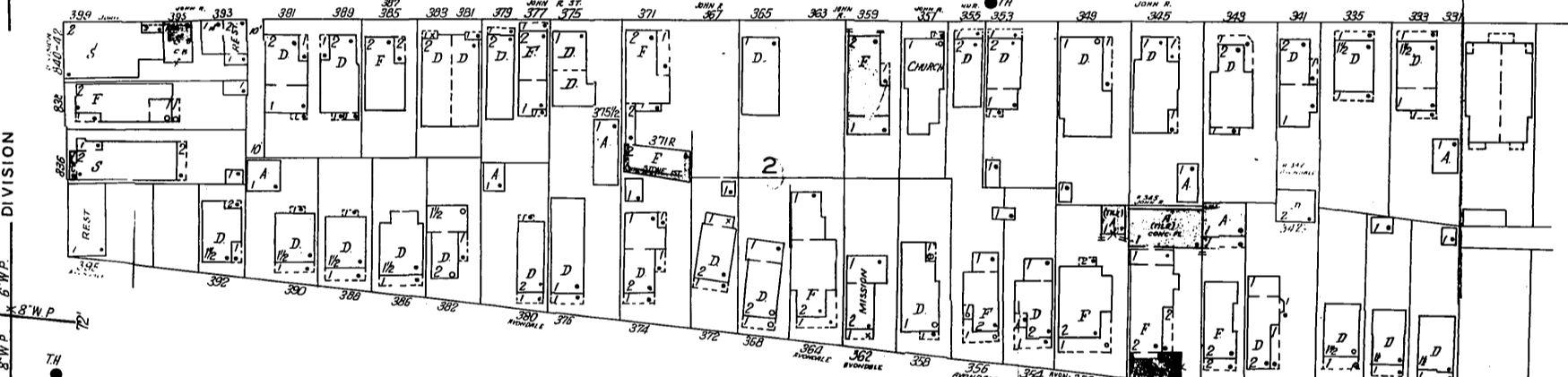


43

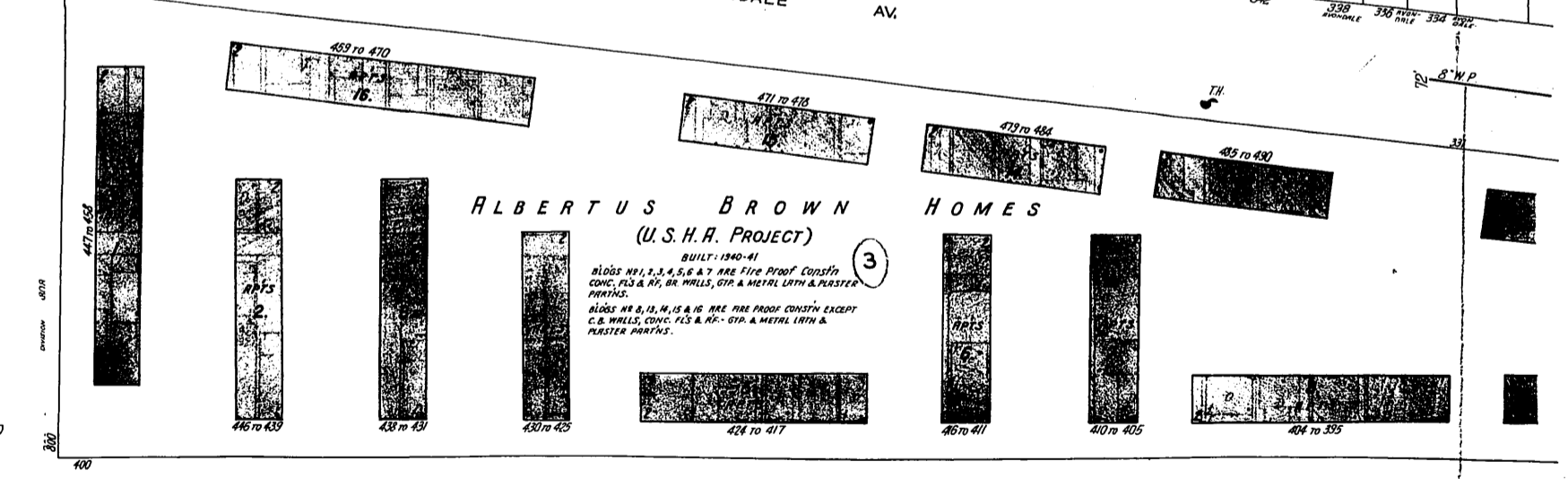
INDIANA AV.



JOHN R. ST.



AVONDALE AV.

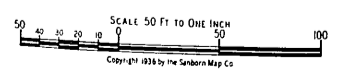


ALBERTUS BROWN HOMES (U.S.H. PROJECT)

BUILT: 1940-41  
BLOCKS NO. 1, 2, 3, 4, 5, 6 & 7 ARE FIRE PROOF CONSTR. CONC. FLG & RF, BR. WALLS, GIP & METAL LATH & PLASTER PARTNS.  
BLOCKS NO. 8, 13, 14, 15 & 16 ARE FIRE PROOF CONSTR. EXCEPT C.B. WALLS, CONC. FLG & RF - GIP & METAL LATH & PLASTER PARTNS.

BELMONT AV.

49



SCALE 50 FT TO ONE INCH

Copyright 1938 by the Sanborn Map Co.