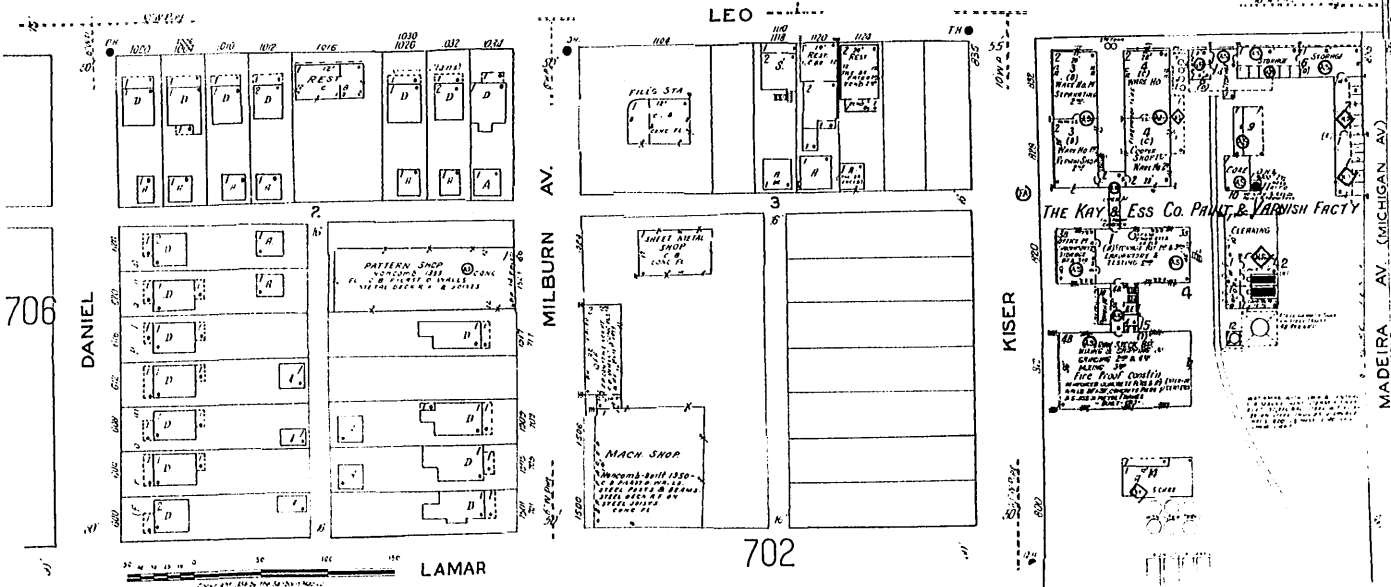


738

**AIRTEMP SUBSIDIARY OF CHRYSLER CORPORATION**  
MFRS OF AIR CONDITIONING UNITS AUTOMATIC HEATING EQUIPMENT

**FACTORY BLDG No 404**

726



706

LEO

MILBURN AV.

KISER

MADEIRA AV. (MICHIGAN AV.)

**THE KEY & ESS CO. PAINT & VARNISH FACTORY**

LAMAR

702

