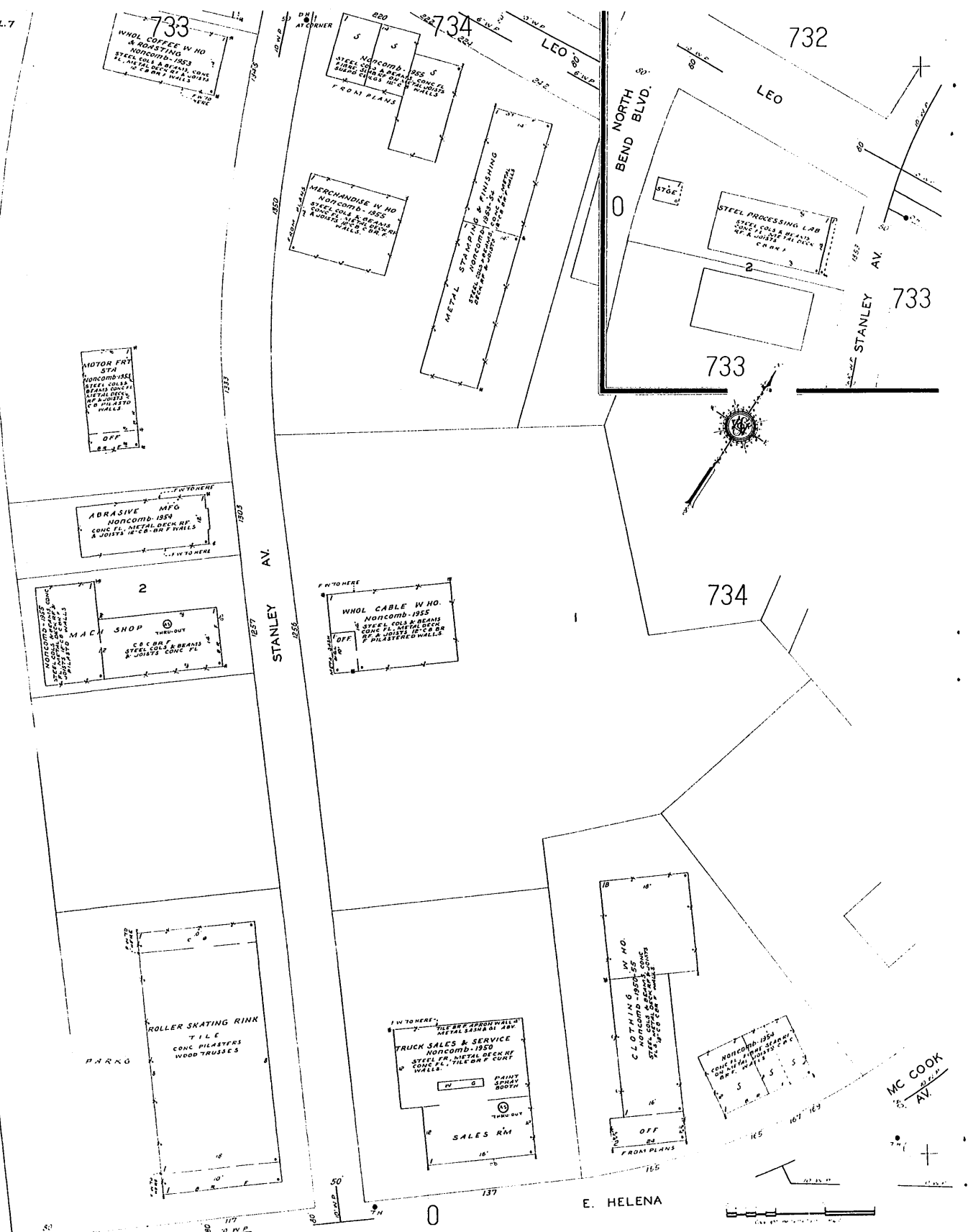


# 733

"A"  
OCT. 1955  
50'



733  
WHOL COFFEE W HO  
NONCOMB-1953  
STEEL COLLS & BEAMS, CONC  
FL, METAL DECK RF, JOISTS  
CONC PL

734  
WHOL CABLE W HO.  
NONCOMB-1955  
STEEL COLLS & BEAMS  
CONC FL, METAL DECK RF  
& JOISTS CONC PL  
P PLASTERED WALLS

732  
STEEL PROCESSING LAB  
STEEL COLLS & BEAMS  
CONC FL, METAL DECK RF  
& JOISTS CONC PL  
P PLASTERED WALLS

MOTOR PARTS  
STA  
NONCOMB-1951  
STEEL COLLS & BEAMS  
CONC FL, METAL DECK RF  
& JOISTS CONC PL  
P PLASTERED WALLS

ABRASIVE MFG  
NONCOMB-1954  
CONC FL, METAL DECK RF  
& JOISTS CONC PL  
P PLASTERED WALLS

MACH SHOP  
THRU-OUT  
CONC BR & BEAMS  
STEEL COLLS & BEAMS  
& JOISTS CONC PL

WHOL CABLE W HO.  
NONCOMB-1955  
STEEL COLLS & BEAMS  
CONC FL, METAL DECK RF  
& JOISTS CONC PL  
P PLASTERED WALLS

ROLLER SKATING RINK  
TILE  
CONC PILASTERS  
WOOD TRUSSES

TRUCK SALES & SERVICE  
NONCOMB-1950  
STEEL OR METAL DECK RF  
CONC FL, TILE OR CONG  
WALLS

PAINT SPRAY BOOTH  
THRU-OUT  
SALES RM

CLOTHING W HO.  
NONCOMB-1955  
STEEL COLLS & BEAMS  
CONC FL, METAL DECK RF  
& JOISTS CONC PL  
P PLASTERED WALLS

OFF  
FRONT PLANS

NONCOMB-1954  
CONC BR & BEAMS  
STEEL COLLS & BEAMS  
CONC FL, METAL DECK RF  
& JOISTS CONC PL

MC COOK  
AV

E. HELENA

